

OFFICE
OF
CIVIL DEFENSE
ST. LOUIS, MISSOURI

CIVIL DEFENSE TEST
WITH
PUBLIC PARTICIPATION

January 16, 1954

TABLE OF CONTENTS

	Page
Introduction	1
Section I - Preparation.....	2
A - General.....	2
B - Public Education.....	2
1 - Envelope Stuffers.....	2
2 - Car Cards - Posters.....	2
3 - Films.....	2
4 - Radio.....	2
5 - Television.....	3
6 - Wired Music.....	3
7 - Newspapers.....	3
8 - House Organs.....	3
9 - Displays	4
10 - Schools and Churches.....	4
11 - Collateral Advertising.....	4
12 - Organizations.....	4
13 - Chamber of Commerce.....	4
14 - Sirens.....	4
C - Police Service.....	5
D - American Legion.....	5
E - Boy Scouts of America.....	6
F - Fire Service.....	6
G - Transportation Service.....	6
H - Plant Protection Service.....	7
I - Miscellaneous.....	7
J - Control Center.....	8
Section II - Operations.....	8
A - Mobilization and Operation.....	8
Section III - Summary.....	9

Table of Contents (continued)

Appendices	Page
Appendix I	Photos of Test..... 10 - 17
Appendix II	Journal of Operations..... 18 - 25
Appendix III	Illustration of Envelope Stuffer and Card.....26
Appendix IV	List of Recipients of Rules..... 27 - 48
Appendix V	Radio Station Announcements..... 49 - 50
Appendix VI	Police Order..... 51 - 53
Appendix VII	List of Persons invited to Control Center..... 54
Appendix VIII	Proclamation by Mayor Tucker..... 55
Appendix IX	Report of Missouri Civil Defense Agency on Test. 56 - 57
Appendix X	Civil Defense Advisory Committee..... 58 - 59 Director and Staff Chiefs of Service
Appendix XI	Report of the Chief of Police..... 60

PUBLIC PARTICIPATION TEST

January 16, 1954

INTRODUCTION

The installation of the St. Louis Attack Warning System, consisting of 127 sirens, was completed and initially tested September 29, 1953. Several malfunctions were corrected and the system perfected in subsequent tests. A Siren Spotter Corps was formed to detect and report any malfunctions of the sirens and the sound coverage of the siren system, based on reports of about 2,000 selected listeners, was analyzed by a Committee appointed by the Director of Civil Defense. These reports indicated that, as of October 14, 1953, St. Louis had an adequate Attack Warning System.

The completion of the system still left two questions unanswered, 1) would the public recognize the distinction between the signal Warning Red and Warning White, and 2) would the public know what to do and would they do it, when they heard the warning signals.

In order to answer these questions it became apparent that a public participation test was necessary. Accordingly, a meeting was held October 10, 1953, under the supervision of Mayor Tucker, to decide if such a public participation test should be scheduled. Several factors had to be considered before reaching this decision. There were several difficulties: the lack of readiness on the part of many building owners who had not marked shelter areas in their buildings, the lack of sufficient acceptable shelters in congested areas of the city, the lack of firm dispersal policy and plans predicated on Warning Yellow sufficiently in advance of attack to provide dispersal, the lack of sufficient data on the hydrogen bomb, which might make present shelter criteria obsolescent and the possibility that the public education program had not been sufficiently implemented to insure reasonable compliance on the part of the public. As a result of this meeting, however, and despite these and other apparent disadvantages, the Office of Civil Defense decided that St. Louis could not afford to wait for ideal conditions. It was concluded that a test should be scheduled either in mid December or early January. As a result of subsequent meetings with the Chiefs of Civil Defense Services and upon recommendation of the Police Department, the date was established as Saturday, January 16, 1954, the time being fixed at 9:45 A.M. After further discussion and consideration, these plans were approved by Mayor Tucker.

Although a surprise test would more accurately determine the effectiveness of the Attack Warning System, it was decided that for this first test the date and time would be fixed in advance and well publicized to avoid alarming the public with the resultant possibility of panic. In future tests, it might be possible to specify only the week in which the test would occur and capitalize on the advantage of surprise to test the effectiveness of the system.

Several factors were responsible for the choice of a Saturday for this first test. It was felt that the population distribution in the city would more closely approximate that existing under actual attack conditions following a Warning Yellow. It was also felt that, since Saturday is not a normal working day, more personnel would be available to participate directly in the drill, as wardens, observers, auxiliary police, and the like. Furthermore, with fewer people at work or in schools on Saturday, both vehicular and pedestrian movement should be more easily controlled, thus facilitating a fuller degree of success in the first test.

With the decision made to conduct the test on Saturday, January 16, it then became necessary to adopt certain assumptions, in order that rules for the test could be made definite. These assumptions were: 1) no Warning Yellow would be received prior to the Warning Red. This assumption was made for two reasons. First, there would be numerous technical and practical difficulties if such a warning were to be assumed. Second, it would make no real difference whether such a warning were received or not: in actual fact, at such time as a Red Warning is sounded, the only acceptable course of action for the public would be to seek immediately available shelter. 2) This test would concentrate on the object of informing as many people in the St. Louis area of the action they are to take on Warning Red. 3) Only a few Civil Defense Services would participate, with the primary objective of testing their mobilization and cooperating plans. These services were Police (Auxiliary Police) Fire, Transportation, and Plant Protection. Other Civil Defense Services had been previously tested and it was felt that this first public participation test could be simplified and the public participation phase emphasized by deferring the other Civil Defense Services to a subsequent test.

Within these assumptions, only one primary problem remained. This was to acquaint the public with the date and hour for the test, to familiarize them with the rules and to enlist their cooperation.

SECTION I - PREPARATION

A. General

Chiefs of Services were called to a meeting at the Office of Civil Defense on October 16, 1953, to discuss plans for the test. Services participation was outlined and all Chiefs were urged to publicize this test through all means at their disposal.

B. Public Education

1. Envelope stuffers. (See Appendix III) 1,465,000 envelope stuffers, approximately 3" x 6", were printed and distributed. (See list contained in Appendix IV.)
2. Car cards - Posters. (See Appendix III) 10,000 car cards, measuring 11" x 28", and prescribing the rules for the test were prepared. Arrangements were made through the courtesy of the Public Service Company and the Loomis Advertising Company for a full showing of the poster in every bus and street car operated by the Public Service Company. In addition these car cards were made available to industries for posting on their bulletin boards and in such other places as would be accessible to the public. Approximately 9,000 such posters were distributed in this manner.
3. Films. A short film trailer was prepared by the Office of Civil Defense outlining those procedures which the public was to follow during the test. This trailer, lasting one minute and thirty-four seconds, was narrated by Mr. Frank Eschen who donated his services. A total of seventy-three 35mm prints was distributed to movie theaters throughout the area through the cooperation of the Motion Picture Theater Owners Association and shown free of charge from January 4 through January 15, inclusive. In addition, ten 16mm prints were made for other showings.
4. Radio. Spot announcements concerned with the test, and the rules for the public, were furnished to each radio station in St. Louis and were broadcast frequently during the preparation period. Copies of announcements during the test may be found in Appendix V of this report.

Members of the staff participated in a panel discussion with Mr. Bruce Barrington, under the auspices of the St. Louis Junior Chamber of Commerce, and broadcast on Radio Station KXOK at 10:00 P.M., Saturday, January 9, 1954. The program dealt primarily with the forthcoming test.

5. Television Stations. Copies of the 16mm film trailer were forwarded to the four television stations in this area and were run several times by each station during the period January 8 - January 16. In addition, television newscasts mentioned the test several times.

6. Wired Music. The facilities of Wired Music, Inc., reaching approximately 30,000 people in public places were used in the same manner as radio stations and spot announcements were broadcast over these facilities. In addition, Wired Music prepared its own material for broadcast immediately prior to and during the test.

7. Newspapers. Regular news releases were sent to the two major dailies and the neighborhood weeklies, on the following schedule.

<u>Date of Release</u>	<u>Subject</u>
12- 6-53	"Rules" printed and various firms who agreed to distribute them
1- 3-54	Active participation of St. Louis Fire Department
1- 6-54	Cooperation of the railroads in Civil Defense
1- 8-54	Participation of 85th Fighter Squadron, Scott Air Force Base
1- 9-54	Proclamation by Mayor Raymond R. Tucker
1-11-54	Statement by James P. Hickok
1-12-54	Control of bridge traffic
1-12-54	Endorsement of organized labor. Statement by Oscar Ehrhardt (CIO) and William Webb (AFL).
1-13-54	Released by the Police Department regarding their part in the test, including endorsement of test by Colonel I. A. Long, President, Board of Police Commissioners
1-14-54	Assistance of American Legion and Boy Scouts
1-14-54	Statement by Aloys Kaufmann, President, Chamber of Commerce of Metropolitan St. Louis
1-15&16-54	Summary of completed preparations for Civil Defense Public Participation Test
1-15&16-54	Federal and State Officials to view Public Participation Test

8. House Organs. With the help of the Chamber of Commerce, it was arranged for numerous "House Organs" circulated in this area to reproduce the "Rules." Through this medium many employees and customers throughout Greater St. Louis were informed of the coming test and of their part in it.

9. Displays. Several window displays were organized by retail outlets throughout the city. In addition, Missouri Civil Defense Agency and the St. Louis Office of Civil Defense exhibited a Civil Defense Display in conjunction with movies that featured our movie trailer, at the St. Louis Home Show at Kiel Auditorium January 8 - 16, 1954. It is estimated that this medium brought the needed information to more than 100,000 persons.

10. Schools and Churches. Approximately 140,000 copies of the "Rules" were distributed through public and parochial schools to students who took them home to their parents. Through the cooperation of the Religious Advisory Committee, announcements were made from the pulpits to parishioners attending church Sunday, January 10, 1954. Church Programs also carried references to the test as did the various school and church bulletins.

11. Collateral Advertising. Several of the large retail stores contributed "Drop In" ads as a part of their regular advertising program in the newspapers.

12. Organizations. Many organizations were asked to publicize the test through their membership. Under this grouping many city, fraternal, and labor organizations disseminated the information through their members. As an example, the CIO and AFofL distributed 235,000 copies of the "Rules" through their locals. Other organizations featured speakers from the Office of Civil Defense explaining the Public Participation Test.

13. Chamber of Commerce. As a result of a meeting October 30 between Civil Defense Staff members and officials of the Chamber of Commerce, the latter sent a letter to each of its members strongly endorsing the test and requesting them to enclose "Rules" in the pay envelopes of all employees; also to have the "Rules" blown up and placed in a prominent spot on their bulletin boards. Results of this request were very effective; hundreds of firms responded to the urging of the Chamber of Commerce.

14. Sirens. In cooperation with University City, a schedule of sounding the sirens was established in order to acquaint residents of this area with the distinction between the signals, Warning Red and All Clear. It was decided that the sirens should be sounded twice weekly at 7:00 P.M. on Monday evening and 11:00 A.M. Thursday morning, on the following schedule:

Monday, November 23, 1953	7:00 P.M.
Thursday, November 26, 1953	11:00 A.M. (cancelled; Thanksgiving
Monday, November 30, 1953	7:00 P.M. Day)
Thursday, December 3, 1953	11:00 A.M.
Monday, December 7, 1953	7:00 P.M.
Thursday, December 10, 1953	11:00 A.M.

It was also agreed between the City of St. Louis and University City that the Warning Red would be scheduled for three minutes (in compliance with FCDA standards) followed by seven minutes of silence before the first note of the All Clear was sounded. This schedule was maintained both in the orientation tests and during the actual test, January 16.

Following these tests the City of Maplewood installed a 10 H.P. siren and also participated in the test January 16. Many other County Communities also participated either wholly or in part. East St. Louis, Madison, and Venice, on the East Side cooperated in stopping bridge traffic.

Upon completion of the initial series of tests, the sirens were given "growl" tests at 11:00 A.M., December 28, January 4, and January 11. These "growl" tests lasted only eight seconds and were scheduled only to enable the Siren Spotter

Corps to locate any defective sirens. Fortunately, no defective sirens were located. Furthermore, the Southwestern Bell Telephone Company kept the control circuits under continual check. As a result, the siren system was in complete readiness for the test on January 16.

C. Police Service

Over-all policies of police participation were outlined in a meeting of Civil Defense Chiefs at the Control Center on October 16. These responsibilities were as follows:

1. To mobilize Police and Auxiliary Police personnel at their emergency duty stations,
2. To stop traffic and clear AIdways for use by Civil Defense traffic only,
3. Wherever possible, to stop vehicular traffic throughout the city on streets other than AIdways,
4. To direct people to the nearest available shelter,
5. Upon sounding of the All Clear, to direct the resumption of traffic until conditions returned to normal.

These responsibilities are essentially the same as those outlined in the St. Louis Civil Defense Plan as accepted and approved by the Police Department.

A meeting was held at Police Headquarters, December 8, with representatives of St. Louis County, East St. Louis and Venice, Illinois, to discuss overall participation in the test and specifically to request the assistance of the surrounding departments in stopping traffic entering the City of St. Louis. It was agreed that the East St. Louis and Venice, Illinois, Police Departments would stop all west bound traffic on the approaches of the MacArthur, Eads, McKinley, and Veterans Bridges promptly on the sounding of the Red Warning. Also, the St. Louis Police Department arranged to hold all east bound traffic on the western approaches to these bridges at the same time. The bridges would then be cleared of traffic at the time of the warning, and thus remain clear of all traffic for the remainder of the test. Subsequently, Madison Civil Defense authorities arranged to stop traffic on the Chain of Rocks Bridge.

On January 5, Chief O'Connell issued instructions to all Commanding Officers, outlining detailed procedures to be followed during the test. Copy of this order is contained as Appendix VI. All Commanding Officers of the Auxiliary Police attended a briefing session at the Police Academy, Monday evening, January 11, at which time mobilization assignments were given to each Commanding Officer. Arrangements were made for the use of St. Louis County Auxiliary Police on the perimeter around St. Louis. In addition, many Auxiliary Police from the county and other nearby communities came into the city to assist the St. Louis Police and their auxiliaries.

The arrangements for utility vehicles, the American Legion, and the Boy Scouts of America were coordinated with the Police Department prior to the issuance of instruction to those groups.

D. American Legion

Arrangements were made with the American Legion to assign two specific responsibilities to its membership. These were:

1. The assignment of approximately 100 observers to be stationed at important intersections throughout the city to report on the success of the test, and
2. The assignment of remaining Legion personnel to business districts and the downtown area to urge pedestrians to take shelter and act as temporary wardens.

The Office of Civil Defense prepared material to implement these two responsibilities and met with the Post Commanders of the 11th and 12th District, Department of Missouri, at their regular meeting at 8:00 P.M., Friday, December 18, at the Soldiers' Memorial. At this meeting the various observer posts were assigned and instructions for warden duty were issued. The observers were instructed to call the St. Louis Control Center immediately after the test, giving the following information:

1. The intersection at which they were located
2. Whether vehicular traffic was stopped, partially stopped, or not stopped
3. Whether pedestrians took shelter, partially took shelter, or did not take shelter, and
4. Their estimate on the percentage figure of success of the test.

Separate letters were written and mimeographed in sufficient quantity so that each Legion Observer had a complete letter of instruction and a sample sheet giving the format of this message. Sufficient copies of the letters of instructions for the temporary Warden Service were also prepared so as to enable distribution of several copies to each American Legion Post throughout the city.

E. Boy Scouts of America

Through the Activities Chairman of the St. Louis Council of the Boy Scouts of America, scouts were requested to act as temporary wardens in the small commercial districts and residential areas not covered by the American Legion. A formal request was directed to Mr. David P. Wohl, President of the St. Louis Council, and copies of this letter were mimeographed and distributed with a covering letter to each scoutmaster in the city through the Scout Executive Office. Copies of the "Rules" were enclosed with these letters which specified clearly that scouts were to urge pedestrians to seek shelter in their respective troop areas. A total of 350 letters was mimeographed and furnished the St. Louis Council for mailing.

F. Fire Service

Under the direction of the Director of Public Safety, Mr. Joseph P. Sestric, plans were made for a token dispersal of selected pieces of fire apparatus from their duty stations to dispersal points during the Red Warning. Most of the fire equipment was kept in its duty location because of the necessity of being ready for normal emergencies. This token dispersal, however, would be useful both as a training exercise and to determine the speed with which equipment could be dispersed under simulated attack conditions.

G. Transportation Service

Mr. John C. Baine, Chief of the Transportation Service, issued instructions requesting all transportation to halt during the test. Public Service Company drivers were instructed to hold their busses or streetcars at the first bus stop or safety zone reached as soon as the Red Warning was sounded and to remain there until the All Clear. They were instructed to urge passengers to remain in the vehicles and not attempt to secure shelter during this test. This decision was based upon the experience of New York City and the difficulty their public transportation companies encountered in the issuance and validation of transfers and re-entry after the

All Clear. The Chief of Transportation also issued requests to trucking industries, taxicab companies and other commercial transportation companies urging that they instruct their drivers to pull to the curb and stop as soon as the Red Warning sounded. The Illinois Terminal Railroad agreed to hold inter-urban rail traffic from Illinois to St. Louis on both sides of the river promptly at 9:45 A.M. and to keep such traffic suspended until the All Clear.

The Terminal Railroad Association agreed to hold all incoming and outgoing passenger traffic at Union Station during the test. They did not and could not stop normal yard traffic but did hold passenger trains in the station. They further agreed to clear the midway at Union Station including rest rooms and restaurants, and escort these people to previously prepared and marked shelter areas under the tracks.

Motorists were instructed to clear the Aidways, and once off Aidways, to pull to the curb and stop. These were reached both through the Automobile Club and through the public education campaign conducted by the Office of Civil Defense.

H. Plant Protection Service

The Plant Protection Service issued a letter to all personnel of the Service on December 8 enclosing a copy of the "Rules" and requesting that they inform their employees by distributing these "Rules" and posting car-cards throughout their facilities. It also urged each facility to plan an exercise on January 16 and to participate in the test. A second follow-up letter was sent containing basically the same information on December 21, 1953. As a result of these letters, a large number of requests poured into the Office of Civil Defense for copies of the "Rules" to be distributed to employees.

In addition, stores, plants, buildings, hotels, and many other facilities throughout the city scheduled an exercise within their own facilities at the time of the test.

I. Miscellaneous

Arrangements were made with the 85th Fighter Interceptor Squadron, USAF, at Scott Air Force Base for a fly-over, two minutes before the sounding of the Red Warning. This fly-over would simulate interceptors vectored to attack enemy aircraft somewhere north of St. Louis.

Arrangements were also made for the public buildings throughout the City to implement a "take shelter" program at the time of the test. These arrangements included City Hall and other Municipal Buildings under the direction of Mr. Sestric, and all city employees were to be directed to the appropriate shelter area.

City institutions under Mrs. E. G. Brungard, Director of Public Welfare, took part in the test.

Mr. Clarence Weismantel of the City Workhouse developed a program for inmates and guards under which mattresses were placed at the windows and all personnel accounted for.

Instructions were issued by Dr. W. E. Hemmerich, Chief of the Medical Service, to the hospitals, to put into operation their Civil Defense Plans.

The Post Office Department agreed to halt all mail trucks at the curb during the test, and to display the posters in post offices.

The Public Library agreed to publicize the test and to conduct an internal exercise January 16.

The Funeral Directors Association agreed to stop funeral processions during the test.

J. Control Center

Approximately 15 members of the Control Center Volunteer Group, under the direction of Mrs. Warren R. Rainey, were scheduled to man the Control Center, January 16, to process incoming reports from the American Legion and Plant Protection Observer Corps. In addition six boy scouts were selected to act as messengers on this date. A special coding system utilizing map symbols were devised and personnel operating the Control Center were briefed on the use of these symbols for this test only. Mr. Dierkes, the Controller, was also asked to report to the Control Center and act in connection with the other members of the Office of Civil Defense. Arrangements were made for the reception of distinguished visitors, some of whom would arrive before the test and some who would proceed to the Control Center immediately following the All Clear. (A list of those invited is contained in Appendix VII.)

SECTION II - OPERATIONS

A. Mobilization and Operation

The staff of the St. Louis Office of Civil Defense, mobilized at the Control Center between 8:30 and 8:45 A.M., Saturday morning, January 16. Weather conditions were as follows: Temperature 22°, visibility 8 miles, wind 13 miles.

The Control Center Volunteer Group reported at the Control Center between 9:00 A.M. and 9:30 A.M. Police and Auxiliary Police were mobilized within reasonable distances of their assigned positions.

A group of visitors, including A. C. Tilley, Regional Director, FCDA Denver; Robert Baker, Supply Officer, FCDA Denver; A. S. McDaniel, State Director, MO CDA; William Lutz, Assistant Director, Kansas City; and Floyd Yates, Fiscal Officer, MO CDA, were assembled at Union Station to observe the test from that vantage point.

At 9:30 A.M. instructions were given to the volunteer telephone operators regarding the form to be used when recording telephone reports received from the Legion Observers. The map plotters were instructed as to the type of symbols to be used on the Operations Map. Scouts, who were used as message runners, were assigned their duties. The Plant Protection Committee of the Office of Civil Defense had personnel assigned to the Control Center to receive messages from field observers located in various plants throughout the city.

When the Red Warning sounded at 9:45 A.M. blinds in the Control Center were closed. Incoming telephone operators, map plotters, controller, message center clerk, journal of operations clerk, and all persons participating in the operation of the Control Center were at their assigned positions. After the All Clear blinds were opened. (Note: This was a token observance of safety measures. It is expected that the Control Center will be relocated in an underground shelter, to be constructed in the near future.)

The first message received in the Control Center was at 9:53 A.M. before the All Clear. The last message received from a Legion Observer was at 10:26 A.M.

Mayor Raymond R. Tucker came to the Control Center after the All Clear. The Mayor was very pleased with the results and was delighted by the cooperation of the people of St. Louis. Mayor Tucker stated that the City Hall was cleared in two-and-a-half minutes.

Colonel William Talbot, Director of the Attack Warning and Communications Division of the Federal Civil Defense Administration, observed and checked on the conduct of the test from the Control Center. Also Mr. Tilley, Regional Director and Mr. McDaniel, State Director, left the Union Station on the All Clear and came to the Control Center to observe and check on the plotting of the results of the test.

The Control Center Operation of the first public participation test of the St. Louis Attack Warning System in St. Louis went off smoothly with no complications. By 12:00 noon, the Control Center was virtually deserted.

III - SUMMARY

On the basis of reports received, it is estimated that this test was very successful. The American Legion Observer Group reported the test had an overall effectiveness of approximately 90% with 100% in the downtown area. Colonel Talbot, Official Observer from FCDA, Washington, commented that it was one of the best tests he had heard about. According to a newspaper spot check, a high percentage of families took shelter in their homes, although there were no means available to determine the exact percentage.

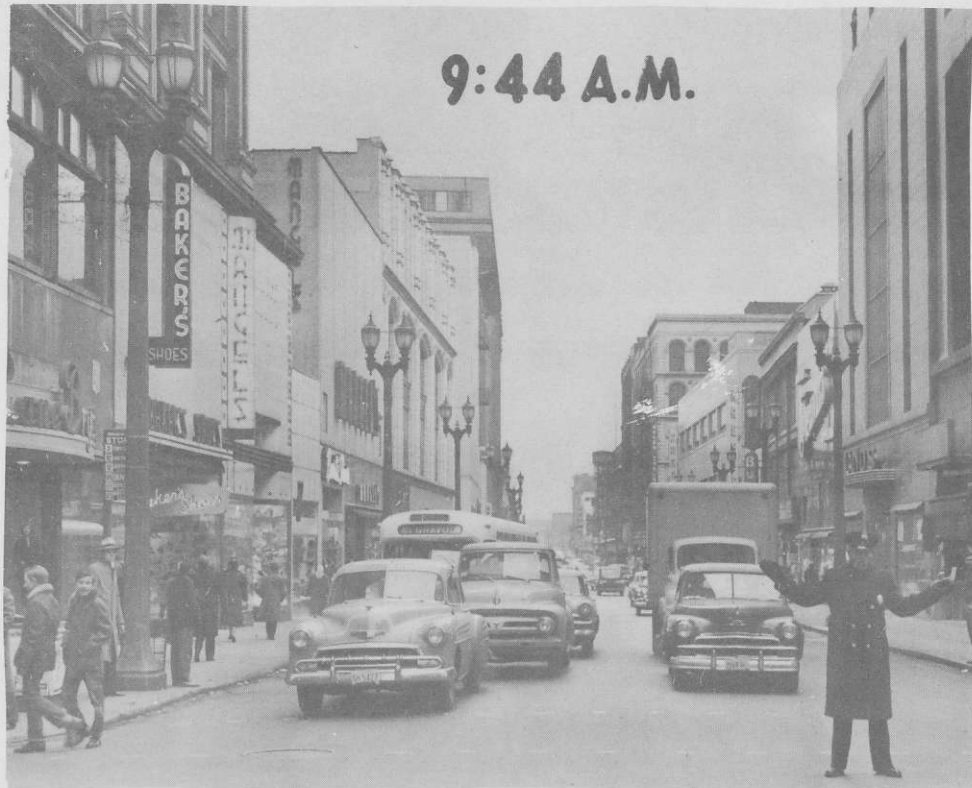
A report of the Assistant State Director, MO CDA is included as Appendix IX.

It is apparent that the public cooperated willingly and wholeheartedly in this test. It appears that the citizens of St. Louis and of the Metropolitan Area are anxious to learn and practice those things that would result in saving many thousands of lives, should a real attack occur, if they can be adequately informed of what they can and should do.

The Press, the Radio and TV Stations, the Theaters, the other media of public information and the many hundreds of other agencies, groups, and individuals who carried the message to the public should feel a keen sense of satisfaction in the task they performed in teaching the people how to save lives if an attack should occur here.

Photos

The following pages consist of photos taken before, during, and immediately after the first Public Participation Test of the St. Louis Attack Warning System.



Sixth Street, looking north from Locust, one minute before Red Warning sounded, with pedestrian and vehicular traffic normal. (Photograph by Meyer, St. Louis Globe-Democrat.)



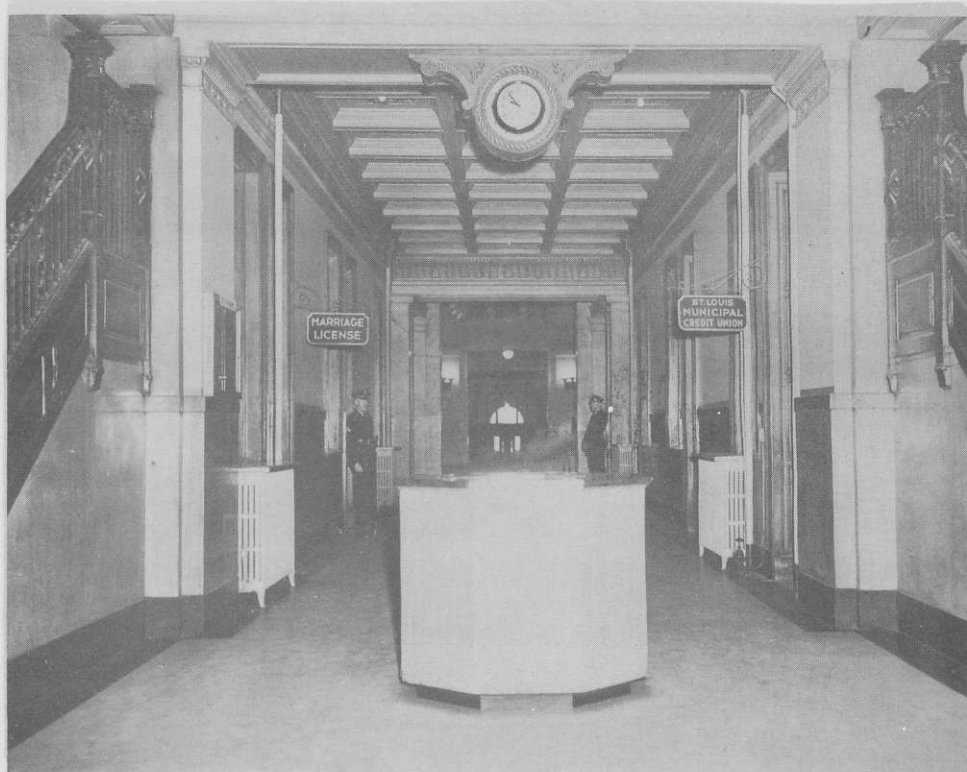
Same view, three minutes later, or two minutes after Red Warning sounded, with traffic cleared and pedestrians in buildings. (Photograph by Meyer, St. Louis Globe-Democrat.)



Explorer and Boy Scouts from Troop 261 at Mimika and West Florissant, get instructions from Scoutmaster, Harry Meinhardt, (second from right) immediately before the test. Third from right in light shirt is Helmuth Tohtz, Explorer Advisor. (Photograph by White, St. Louis Post Dispatch.)



Explorer Scouts, Wayne Buder (left) and Harold Hyman, of Troop 261, flag motorists to the curb at Florissant and Riverview Avenues on the Red Warning. (Photograph by Vogt, St. Louis Globe-Democrat.)



Information Desk, City Hall, eight minutes after sounding Red Warning and Two minutes before the All Clear. (Note: the clock.) (Photograph by Vogt, St. Louis Globe-Democrat.)



Shelter Area under the tracks at Union Station. Midway was cleared and passengers and railroad personnel took shelter within a few minutes after the start of the test. (Photograph by Spainhower, St. Louis Post-Dispatch.)



Washington Avenue Looking West from Fourth Street during the Red Warning (Photograph by Linck, St. Louis Post-Dispatch.)

Washington Avenue looking east from Fourth Street showing traffic on Eads Bridge being cleared during Red Warning. (Photography by Linck, St. Louis Post-Dispatch.)



Twelfth Street Aidway, looking South from Olive Street. (Photograph by St. Louis Post-Dispatch.)



Locust Street, looking West from Sixth Street. (Photograph by Meyer, St. Louis Globe-Democrat.)



Officials viewing results of the test as plotted on the Operations Map at the Civil Defense Control Center. Front Row, left to right: Joseph P. Sestric, Director of Public Safety; F. P. Hardaway, Director of Civil Defense; Chief of Police, Jeremiah O'Connell; Raymond R. Tucker, Mayor; Col. I. A. Long, Chairman, Board of Police Commissioners; Col. Wm. Talbot, Director of Warning & Communications Division, FCDA; Mrs. Thomas Kemp & Mrs. Burton F. Connolly. Back Row: Col. Wm. Weiss, Civil Defense Coordinator, American Legion; Commander Marshall Hageman, 11th & 12th District, Dept. of Missouri, American Legion; Jack Dierkes, Controller; Col. Glen R. Townsend.
(Photograph by St. Louis Post-Dispatch.)

People leaving shelter area at Union Station following All Clear. In right foreground is Robert Baker, FCDA Denver, and Floyd Yates, MO CDA. (Photograph by Spainhower, St. Louis Post-Dispatch.)





Overall view of Civil Defense Control Center, showing results of the test being plotted as reports are received from observers immediately after the All Clear. (Photograph by Ferguson, St. Louis Post-Dispatch.)



Volunteer telephone operators receiving incoming messages at the Civil Defense Control Center. Scout at left is delivering messages from telephone operators to Message Center Desk. (Photography by Ferguson, St. Louis Post-Dispatch.)

APPENDIX II
CIVIL DEFENSE CONTROL CENTER
ST. LOUIS
JOURNAL

- 3 a Vehicular traffic completely stopped
- b Vehicular traffic partially stopped
- c Vehicular traffic was not stopped
- 4 a Pedestrians did take shelter
- b Pedestrians partly took shelter
- c Pedestrians did not take shelter
- 5 _____ % successful

FROM: 1/16/54 - 9:53 a.m.
 (Date and Hour)

TO: 1/16/54 - 10:34 a.m.
 (Date and Hour)

Time (1)		Serial No.	Time (2) Dated	Public Participation Test, St. Louis Attack Warning System, January 16, 1954. Messages and incidents plotted re: code above. Indicate intersection, followed by code. Incidents, Messages, Orders, Etc.	Action Taken
In	Out				
9:53		1	9:53	Delmar & Goodfellow 3a 4a 100%	Plotted
9:54		2	9:54	Two small machines running in plant only way we could hear sirens is over radio. Suggestion: Have radio stations broadcast red warning. No traffic moving. P.P.* W. J. Keller Flat Steel Mfg.	"
9:55		3	9:55	Delmar & Skinker 3b 4b 80%	"
9:55		4	9:53	Jefferson & Gravois 3a 4a 95%	"
9:57		5	9:56	Delmar & Hamilton 3b 4c 60%	"
9:58		6	9:58	Kingshighway & Page 3a 4b 60%	"
9:58		7	9:58	12th & Washington 3a 4b 95%	"
9:58		8	9:56	Bdwy. & E. Grand 3a 4a 100%	"
9:59		9	9:58	3500 Pine St. 3b 4a 99%	"
9:59		10	9:58	12th & Delmar 3a 4a 100%	"
10:00		11	9:59	Grand & Arsenal 3a 4a 100%	"
10:00		12	10:00	Grand & Nat'l. Bridge 3b 4c 100%	"
10:00		13	9:59	Grand-Olive & Lindell 3a 4a 100%	"
10:00		14	9:59	8th & Pine 3a 4a 100%	"
10:00		15	9:59	DeBaliviere & Delmar 3a 4b 50%	"

NOTES: (1) Refers to time of receipt or sending in Control Center.

(2) Refers to time information originated, and thus calls attention to the age of the information.

EXPLANATION: See other side.

* P.P. abbreviation for Plant Protection Messages

CIVIL DEFENSE CONTROL CENTER

ST. LOUIS

JOURNAL

3a Vehicular traffic completely stopped

b Vehicular traffic partially stopped

c Vehicular traffic was not stopped

4a Pedestrians did take shelter

b Pedestrians partly took shelter

c Pedestrians did not take shelter

5 _____ % successful

FROM: _____
(Date and Hour)

TO: _____
(Date and Hour)

Time (1)		Serial No.	Time (2) Dated	Public Participation Test, St. Louis Attack Warning System, January 16, 1954. Messages and incidents plotted re: code above. Indicate intersections, followed by code. Incidents, Messages, Orders, Etc.	Action Taken
In	Out				
10:00		16	9:58	Kingshighway & Nat'l Bridge 3a 4a 100%	Plotted
10:01		17	9:57	Nat'l Bridge & Goodfellow 3a 4a 100%	"
10:01		18	10:00	12th & Locust 3a 4a 100%	"
10:01		19	10:01	Bdwy. & Loughborough 3a 4a 100%	"
10:01		20	10:00	Chippewa & Jamieson 3a 4a 99%	"
10:01		21	9:59	Plaza Dr. & Pershing 3b 4b 95%	"
10:01		22	10:00	Grand & Gravois 3a 4a 100%	"
10:01		23	10:00	Hamilton & Lotus 3b 4b 95%	"
10:02		24	9:57	Jeff. & Cherokee 3a 4b 75%	"
10:02		25	10:01	Heard siren & participated in normal manner. P.P. Mr. Shenberg Lantz Bro. Bakery	"
10:02		26	9:56	Skinker & Clayton 3b 4c 70%	"
10:02		27	10:02	Easton & Taylor 3a 4b 85%	"
10:02		28	9:55	4th & Pine 3b 4a 90%	"
10:02		29	10:01	Gravois & Chippewa 3a 4a 100%	"
10:02		30	9:56	Bdwy. & Chippewa 3a 4b 90%	"
10:03		31	10:03	13th & Cass 3b 4b 55%	"

NOTES: (1) Refers to time of receipt or sending in Control Center.

(2) Refers to time information originated, and thus calls attention to the age of the information.

EXPLANATION: See other side.

CIVIL DEFENSE CONTROL CENTER

ST. LOUIS

JOURNAL

- 3 a Vehicular traffic completely stopped
- b Vehicular traffic partially stopped
- c Vehicular traffic was not stopped
- 4 a Pedestrians did take shelter
- b Pedestrians partly took shelter
- c Pedestrians did not take shelter
- 5 _____ % successful

FROM: _____
(Date and Hour)

TO: _____
(Date and Hour)

Time (1)		Serial No.	Time (2) Dated	Public Participation Test, St. Louis Attack Warning System, January 16, 1954. Messages and incidents plotted re: code above. Indicate intersection, followed by code.	Incidents, Messages, Orders, Etc.	Action Taken
In	Out					
10:03		32	9:56	Jeff. & Olive	3b 4c ?	Plotted
10:03		33	9:57	Southwest & Watson	3a 4a 100%	"
10:04		34	10:00	Grand & Washington	3a 4a 100%	"
10:05		35	9:59	Jefferson & Russell	3b 4a 95%	"
10:05		36	10:02	Grand & Holly Hills	3a 4a 100%	"
10:05		37	10:00	Jefferson & Chouteau	3b 4a 90%	"
10:06		38	9:58	Natural Bridge & Florissant	3a 4a 99%	"
10:06		39	10:01	Hampton & Oakland	3c 4b 20%	"
10:07		40	10:02	Kingshighway & Manchester	3a 4b 98%	"
10:07		41	10:00	Grand and Chouteau	3a 4a 100%	"
10:07		42	10:01	15th and Chouteau	3a 4a 100%	"
10:08		43	10:01	7th and Olive	3a 4a 100%	"
10:08		44	10:02	Hamilton & Easton	3b 4b 30%	"
10:08		45	10:03	Jefferson Avenue Viaduct	Traffic moved too soon	
10:08		46	10:02	Russell and Thurman	3c 4c 0%	"
10:09		47	10:01	8th and Olive	3a 4a 100%	"
10:09		48	10:03	6th & Locust	3a 4b 95%	"

NOTES: (1) Refers to time of receipt or sending in Control Center.

(2) Refers to time information originated, and thus calls attention to the age of the information.

EXPLANATION: See other side.

**CIVIL DEFENSE CONTROL CENTER
ST. LOUIS**

JOURNAL

- 3 a Vehicular traffic completely stopped
- b Vehicular traffic partially stopped
- c Vehicular traffic was not stopped
- 4 a Pedestrians did take shelter
- b Pedestrians partly took shelter
- c Pedestrians did not take shelter

FROM: _____ (Date and Hour)

TO: _____ (Date and Hour)

5 _____ % successful

Time (1)		Serial No.	Time (2) Dated	Public Participation Test, St. Louis Attack Warning System, January 16, 1954. Messages and incidents plotted re: code above. Indicate intersection, followed by code. Incidents, Messages, Orders, Etc.	Action Taken
In	Out				
10:09		49	10:04	9th and Olive 3a 4a 100%	Plotted
10:09		50	10:04	Chippewa and Watson 3a 4a 98%	"
10:09		51	10:02	7th and Locust 3a 4a 100%	"
10:10		52	10:04	Grand and Market 3a 4a 100%	"
10:10		53	10:04	7th and Olive 3a 4a 100%	"
10:10		54	10:02	Chouteau and Bdwy. 3a 4a 100%	"
10:10		55	10:04	6th and Olive 3a 4a 100%	"
10:10		56	10:02	Jeff. and Washington 3a 4b 95%	"
10:11		57	10:03	Lindell and Vandeventer 3b 4a 95%	"
10:11		58	10:10	Heard siren & participated in prescribed manner. Two minutes to shelter average. No public participation. Very successful. P.P. Brett Ward Baking Co.	"
10:11		59	10:08	No traffic on market or Clark - all men went to stations, 100% compliance. Heard sirens on bldg. Had all doors locked for security. All postal drivers instructed to pull to curb. Please contact P. O. Garage if any P. O. drivers failed to comply. P.P. Brauer Post Office Garage 1725 Clark	"

NOTES: (1) Refers to time of receipt or sending in Control Center.

(2) Refers to time information originated, and thus calls attention to the age of the information.

EXPLANATION: See other side.

**CIVIL DEFENSE CONTROL CENTER
ST. LOUIS**

JOURNAL

- 3 a Vehicular traffic completely stopped
- b Vehicular traffic partially stopped
- c Vehicular traffic was not stopped
- 4 a Pedestrians did take shelter
- b Pedestrians partly took shelter
- c Pedestrians did not take shelter

FROM: _____
(Date and Hour)

TO: _____
(Date and Hour)

5 % successful

Time (1)		Serial No.	Time (2) Dated	Public Participation Test, St. Louis Attack Warning System, January 16, 1954. Messages and incidents plotted re: code above. Indicate intersection, followed by code. Incidents, Messages, Orders, Etc.	Action Taken
In	Out				
0:11		60	10:03	Gravois & Delor 3a 4b 80%	Plotted
0:11		61	10:02	18th & Clark 3a 4a 100%	"
10:11		62	10:02	Gravois & Delor 3a 4b 80%	"
10:11		63	10:02	Jeff. & Scott 3b 4a 80%	"
10:12		64	10:03	Union & St. L. 3a 4a 100%	"
10:12		65	10:02	7th & Olive 3a 4a 100%	"
0:12		66	10:02	7th & Locust 3a 4a 100%	"
0:12		67	10:02	Broadway & Olive 3a 4a 100%	"
0:12		68	10:02	Grand & Pine 3a 4a 100%	"
0:13		69	10:03	13th & Locust 3a 4a 100%	"
0:13		70	10:03	Sirens heard only faintly. Employees went to shelter. Could not hear sirens if machinery were running. Suggest each plant maintain "listening" system. P.P. M. Walsh Ruberoid Co. 9215 Riverview	"
0:13		71	10:02	6th & Locust 3a 4a 100%	"
0:14		72	10:03	Page & Union 3a 4a 95%	"
0:14		73	10:03	Bdwy. & St. L. 3a 4a 100%	"

NOTES: (1) Refers to time of receipt or sending in Control Center.

(2) Refers to time information originated, and thus calls attention to the age of the information.

EXPLANATION: See other side.

CIVIL DEFENSE CONTROL CENTER

ST. LOUIS

JOURNAL

- 3 a Vehicular traffic completely stopped
- b Vehicular traffic partially stopped
- c Vehicular traffic was not stopped
- 4 a Pedestrians did take shelter
- b Pedestrians partly took shelter
- c Pedestrians did not take shelter

FROM: _____
(Date and Hour)

TO: _____
(Date and Hour)

5 % successful

Time (1)		Serial No.	Time (2) Dated	Public Participation Test, St. Louis Attack Warning System, January 16, 1954. Messages and incidents plotted re: code above. Indicate intersection, followed by code. Incidents, Messages, Orders, Etc.	Action Taken
In	Out				
10:14		74	10:03	6th & Olive 3a 4a 100%	Plotted
10:14		75	10:04	8th & Franklin 3a 4a 100%	"
10:14		76	10:02	Kingshighway & Chippewa 3a 4a 95%	"
10:14		77	10:02	Kingshighway & Delmar 3a 4a 100%	"
10:14		78	10:03	Kingshighway & Florissant 3b 4a 95%	"
10:15		79	10:04	Olive & Bdwy. 3a 4a 100%	"
10:15		80	10:04	8th & Locust 3a 4a 100%	"
10:15		81	10:05	California & Cherokee 3a 4a 100%	"
10:15		82	10:02	12th & Locust 3a 4a 100%	"
10:15		83	10:02	Kingshighway & Gravois 3b 4a 95%	"
10:15		84	10:05	Jeff. & Olive 3a 4a 100%	"
10:15		85	10:05	Jeff. & Olive (9th Precinct) 3c 4c 2%	"
10:16		86	10:05	Grand & Meramec 3b 4b 90%	"
10:16		87	10:05	6th & Washington 3a 4a 100%	"
10:16		88	10:05	Riverview & Halls Ferry 3b 4a 50%	"
10:16		89	10:08	Union & Easton 3b 4b 25%	"
10:16		90	10:00	Grand & Page 3a 4a 90%	"

NOTES: (1) Refers to time of receipt or sending in Control Center.

(2) Refers to time information originated, and thus calls attention to the age of the information.

EXPLANATION: See other side.

CIVIL DEFENSE CONTROL CENTER

ST. LOUIS

JOURNAL

3 a Vehicular traffic completely stopped

b Vehicular traffic partially stopped

c Vehicular traffic was not stopped

4 a Pedestrians did take shelter

b Pedestrians partly took shelter

c Pedestrians did not take shelter

5 % successful

FROM: _____
(Date and Hour)

TO: _____
(Date and Hour)

Time (1)		Serial No.	Time (2) Dated	Public Participation Test, St. Louis Attack Warning System, January 16, 1954. Messages and incidents plotted re: code above. Indicate intersection, followed by code. Incidents, Messages, Orders, Etc.	Action Taken
In	Out				
10:17		91	10:05	18th & Market 3a 4a 90%	Plotted
10:17		92	10:10	10th & Olive 3a 4a 100%	"
10:17		93	10:15	DeBaliviere & Delmar 3c 4c 20%	"
10:18		94	10:05	7th & St. Charles 3a 4a 100%	"
10:18		95	10:05	12th and Market 3a 4a 100%	"
10:18		96	10:05	7th & St. Charles 3a 4a 100%	"
10:18		97	10:05	12th & Market 3a 4a 100%	"
10:19		98	10:06	Chippewa & Watson 3a 4a 98%	"
10:19		99	10:09	12th & Franklin 3a 4a 100%	"
10:20		100	10:05	Bdwy. & Locust 3c 4c 35%	"
10:20		101	10:07	7th & Olive 3a 4b 95%	"
10:20		102	10:07	6th & St. Charles 3a 4b 95%	"
10:20		103	10:20	Grand & Gravois 3a 4a 100%	"
10:24		104	10:24	Lindell & Kingshighway 3a 4a 100%	"
10:26		105	10:26	14th & St. Louis 3a 4b 60%	"

NOTES: (1) Refers to time of receipt or sending in Control Center.

(2) Refers to time information originated, and thus calls attention to the age of the information.

EXPLANATION: See other side.

**CIVIL DEFENSE CONTROL CENTER
ST. LOUIS**

JOURNAL

- 3 a Vehicular traffic completely stopped
- b Vehicular traffic partially stopped
- c Vehicular traffic was not stopped
- 4 a Pedestrians did take shelter
- b Pedestrians partly took shelter
- c Pedestrians did not take shelter
- 5 _____ % successful

FROM: _____
(Date and Hour)

TO: _____
(Date and Hour)

Time (1)		Serial No.	Time (2) Dated	Public Participation Test, St. Louis Attack Warning System, January 16, 1954. Messages and incidents plotted re: code above. Indicate intersection, followed by code. Incidents, Messages, Orders, Etc.	Action Taken
In	Out				
10:32		106	10:32	Heard siren and shut down completely. All employees were in shelter within 2 min. No pedestrians participated. P.P. Sidney Weber, Inc. 2218 Locust	Plotted
10:34		107	10:34	100% compliance - went to stations and shelters according to prearranged plan. Could hear sirens. P.P. E. F. Mangelsdorf, Inc. 1020 S. 4th	"

NOTES: (1) Refers to time of receipt or sending in Control Center.

(2) Refers to time information originated, and thus calls attention to the age of the information.

EXPLANATION: See other side.

EXPLANATION

The Journal is the Daybook or Log. Short messages or instructions issued or received may be recorded verbatim. The substance of longer messages may be recorded. In case of greater length, the message number, etc., is recorded in the Journal and the message is filed with the Journal. Written matter, either sent or received should be filed with the Journal. For every paper filed with this Journal, a brief notation should be made on the face of the Journal.

The Journal should constitute a written record, in the briefest form consistent with clarity, of everything that transpires in Civil Defense, during the disaster period, which comes to the knowledge of the Control Center through telephone messages, person to person reports or discussion, or through other messages or documents.

Time (1)	
In	Out
10:32	
10:34	10:31

NOTES: (1) Refers to time of receipt or sending in Control Center.
(2) Refers to time information originated, and thus calls attention to the age of the information.
EXPLANATION: See other side.

On Saturday, January 16,
at 9:45 A.M., all St. Louis
Air Raid Sirens will sound
a "Red Warning" first,
and then an "All Clear".
THIS WILL BE A TEST.

ON "RED WARNING"
(3-minute
wailing siren)

ON "ALL CLEAR"
(3 one-minute
blasts)

YOUR PART IN THE CIVIL DEFENSE TEST

IF YOU ARE ↓

1. In a vehicle

2. On the street

3. At home

4. In a building

5. At school

HERE'S WHAT YOU DO ↓

On an Aidway get off if possible or pull to curb. Elsewhere — pull to curb if you can. If you can't, stop where you are. All get down as low as possible. (Hunt better shelter in real attack.)

Downtown, or in a business district, get into a large building quickly. Elsewhere—get in a building, or close to a solid wall or earth embankment. Shield your face and crouch down. (Lie down in real attack.)

Go to basement or other prepared shelter. Turn off all open flames but DON'T shut off pilot lights.

Obey the wardens. Go to assigned shelters, if any. Otherwise stay put, but get away from windows.

Obey the teacher. Go to assigned shelter quietly.

WHEREVER YOU ARE: RESUME NORMAL ACTIVITY
ST. LOUIS OFFICE OF CIVIL DEFENSE

Envelope Stuffer

ON
SATURDAY
JAN. 16
AT
9:45 A. M.

★ YOUR PART IN THE CIVIL DEFENSE TEST ★

ALL ST. LOUIS AIR RAID SIRENS WILL SOUND A "RED WARNING" FIRST, AND THEN AN "ALL CLEAR." THIS WILL BE A TEST.

IF YOU ARE

HERE'S WHAT YOU DO

1. IN A VEHICLE - - - - -

On an Aidway, get off if possible or pull to curb. Elsewhere - Pull to curb if you can. If you can't, stop where you are. All get down as low as possible. (Hunt better shelter in real attack.)

2. ON THE STREET - - - - -

Downtown, or in a business district, get into a large building quickly. Elsewhere - get in a building, or close to a solid wall or earth embankment. Shield your face and crouch down. (Lie down in real attack.)

3. AT HOME - - - - -

Go to basement or other prepared shelter. Turn off all open flames but DON'T shut off pilot lights.

4. IN A BUILDING - - - - -

Obey the wardens. Go to assigned shelters, if any. Otherwise stay put, but get away from windows.

5. AT SCHOOL - - - - -

Obey the teacher. Go to assigned shelter quietly.

WHEREVER YOU ARE RESUME NORMAL ACTIVITY
ST. LOUIS OFFICE OF CIVIL DEFENSE



ON "RED WARNING"
(3-minute
wailing siren)

ON "ALL CLEAR"
(3 one-minute
blasts)

Car-Card Poster

A P P E N D I X I V

Distribution List of "Rules"

Office of Civil Defense Madison, Illinois	Director of Public Safety 405 City Hall
Office of Civil Defense East St. Louis, Illinois	St. Louis Jr. Women's Chamber of Commerce
Mrs. Catherine Zimmerman 4604 South Grand	Lowe's State Theater
Women's Auxiliary to the St. Louis Dental Society	Central Lion's Club East St. Louis, Illinois
Mrs. A. E. Padden 5334 Walsh	Women's Traffic Club
Emerson Electric Company 8100 Florissant	Optimist Club Granite City, Illinois
Quota Club	Bell Telephone Company
Mrs. Willard B. Shelp 484 Lake	Mr. Paul Taub Overland, Missouri
Baltimore and Ohio Railroad 408 Pine	Cotton Belt Railroad
Lambert Field	Famous-Barr Company
Catholic Parochial Schools	Associated General Contractors
Lutheran Parochial Schools and Churches	St. Louis Hospitals
St. Louis Restaurant Association	Assessor's Office City Hall
Atlas Linen and Towel Service	Motion Picture Owners Association
Service Club for the Blind	St. Louis Council of Jewish Women
American Fixture Company	Chamber of Commerce
Sertoma Club of St. Louis	Office of Civil Defense St. Louis County, Missouri
Wetterau Grocer Company, Incorporated (I. G. A.)	Automobile Club of Missouri
Urban League	Terminal Railroad
	C. I. O., Room 523 Buder Building Seventh and Market

Distribution List of "Rules"

Illinois Terminal Railroad
710 North Twelfth Street

Southside Lyon's Club

Berry Tractor and Equipment Company
4121 Forest Park

Morgens-Scott Cleaning Company
3407 Olive Street

Water Commissioner
Room 312 - City Hall

Mental Health Association of St. Louis

Premier Engraving Company
818 Walnut

Jake Lindey American Legion Post 107
4284 West Cote Brilliante

Drug Chemical and Allied Trades
Association of St. Louis
3114 Franklin

Downtown Kiwanis Club

Metropolitan Church Federation
1528 Locust

Hotel Association
Syndicate Trust Building

Plant and Building Protection Committee
St. Louis Chamber of Commerce

United States Post Office

Independent Packing Company
824 South Vandeventer

Sun Life Insurance Company of Canada
416 Locust Street

Shepley Kroger
319 North Fourth Street

Frank and Meyer Neckwear
1130 Washington

Geraldine Brother's Real Estate Company
813 Chestnut

Commercial Credit Rating Company
511 Locust Street

Graham Paper Company
Eleventh and Spruce

Daniel and Henry Company
753 Pierce Building

Eagle Stamp Company
322 North Twelfth Street

Heffern-Neuhoff
809 Locust Street

Mr. B. A. Sherwood
1818 Arcade Building

Majestic Manufacturing Company
4515 Gustine

Board of Religious Organizations
Room 322 - Buder Building

Mr. Thomas Goldenberg
6317 Clemens Avenue
University City 5, Missouri

Miss Mary Leslie
1214 Twill Court

Mrs. Leslie T. Barco
2211 Sullivan

Mr. George Perry
3713 Washington

Fisher Body Plant Protection Office
Union and Natural Bridge

Mr. Robert Dowd
5176 Eichelberger

Banner Iron Works
1920 South Kingshighway Boulevard

Chamber of Commerce

Placke Chevrolet
2244 South Kingshighway Boulevard

Koochook Company, Incorporated
3111 Locust Street

Distribution List of "Rules"

G. C. Kramer Dry Plate Company
1835 Shenandoah

Maloney Electric Company
5390 Bircher

Glidden Company
106 Gratiot Street

International Harvester
4010 West Pine

Mrs. George Trafton
1019 Donnell

Group Hospital Service
4908 Delmar Boulevard

Monsanto Chemical Company
1700 South Second Street

Brandt Electric Company
904 Pine Street

American Bearing Corporation
4501 Fyler

National Food Stores
1106 Central Industrial Drive

White-Rogers Electric Company
1209 Cass

Vickers Electric Division
1815 Locust Street

Schwartz Sample Company
1129 St. Charles

Metropolitan St. Louis Company
718 Locust Street

Medart Auto Electric Company
3134 Washington Avenue

Miss Isabelle Breidenbach
4129 Fillmore Street

Catholic Women's League
1515 North Market

Rexite Casting Company
4535 Pope

Scheff Manufacturing Company
5757 Manchester

Western Life Insurance Company
1183 North Kingshighway Boulevard

Twentieth Century Art Club

Mexican American Hat Company
502 North Twelfth Street

Collins Timber Company
1706 Olive Street

Auxiliary 2340 V. F. W.
2910 Hammond Avenue

Compton and Sons, Incorporated
216 South Seventh Street

Chevrolet St. Louis Division of General
Motors
3809 North Union Boulevard

Railway Express
1730 Clark

Commercial Life Insurance
5579 Pershing

Keystone Warehousing
1025 Spruce

United States Steel Supply
Post Office Box 27

General Metal Products Company
3883 Delor Street

Bethlehem Steel Company
Room 1000 - Shell Building

Dunn and Bradstreet
710 North Twelfth Street

Air Products Company
4228 Forest Park

St. Louis Union Trust
323 North Broadway

J. Pellarin and Company
1427 Goodfellow

Distribution List of "Rules"

Russell and Axon
408 Olive Street

Briner Electric Company
1015 Delmar

Fleicher Seger Construction Company
4900 Washington

Public School Patrons Alliance
3874 Humphrey

A. N. Rechten
810 Pine

Stout Signs Company
6425 West Florissant

Wallace Pencil Company
2001 South Hanley Road
Maplewood, Missouri

Browning Arms
1706 Washington

Ozark Airlines
Lambert Field

Pandjiris Weldment Company
5151 Northrup

Rock Island Lines
519 International Building

Sinclair Refining Company
1301 Gratiot

Cinch Manufacturing Corporation
2621 Locust

Mrs. Joseph King
3946a Lee Avenue

S. G. Adams Company
Tenth and Olive Street

American Iron and Steel Company
5577 Manchester

Northwestern Bank and Trust Company
1500 St. Louis Avenue

Dr. M. S. Vitale
3861 St. Louis

Boatmen's National Bank
300 North Broadway

Miss Marie Harsford
5963 Easton

G. H. Walker and Company
503 Locust Street

Standard Display Company

Perfection Manufacturing Company
2701 North Leffingwell

Zemitzsch Displays, Incorporated
411 North Eleventh Street

Scruggs-Vandervoort-Barney
Ninth and Olive Street

Union Bag and Paper Company
8300 Valcour
Affton 23, Missouri

Columbia Drive Yourself
Eighth and Lucas

Pet Milk Company
1401 Arcade Building

Mr. S. D. Leidesdorf
1100 Continental Building

National Arts Supply Company
1100 Illinois
East St. Louis, Illinois

Merit Sales Builders
4200 Forest Park Boulevard

Mrs. M. L. Potter
5574 Cote Brilliante

Dr. M. Greenberg
6112 Easton Avenue

American Mutual Liability Insurance Co.
111 North Fourth Street

The Fairgrounds Hotel
3644 Natural Bridge

Westinghouse Electric Company
411 North Seventh Street

Distribution List of "Rules"

Colcord Wright Machinery and Supplies
1229 North Broadway

Barnes Hospital
600 South Kingshighway Boulevard

Griesedieck Brothers
1920 Shenandoah

Mason P. T. A.
6443 Marmaduke

Friscoe Railraod
Friscoe Building

Tuberculosis Society
911 Locust Street

Feutz Calvin Funeral Home
4828 Natural Bridge

Thau-Nolde, Incorporated, Dental Supplies
101 North Seventeenth Street

Dennis Chemical Company
2701 Papin

Gebhart Chevrolet Company
5616 Gravois

North American Lamp Company
1014 Tyler

Mississippi Glass Company
88 Angelica Street

Valley Furniture Company
3326 North Twenty-First Street

Mallinckrodt Chemical Company
3600 North Second Street

Mr. Kermit F. Croissank, Chairman
Civil Defense Committee
6206 State Street
East St. Louis, Illinois

Jr. Women's Chamber of Commerce, Inc.
3838 Flora Place

Washington University School of
Business and Public Administration

St. Louis Assembly Plant
Roberton, Missouri

Service Lines, Incorporated
514 South Fourth Street

Magic Chef Company

Bokern Real Estate Company
122 North Seventh Street

V. F. W. - Auxiliary 3944
5545 Sunberry

Olin Industries

United Shoe Machinery Corporation
2200 Washington

Presstite Engineering Company
3738 Chouteau

Fulton Bag and Cotton Mills
217 Cedar Street

Maryland Casualty
930 Pierce Building

Phillips-Petroleum Company
4251 Lindell Boulevard

Caroline Evangelical and Reformed Mission
1823 Hickory

Puhl and Hepper Manufacturing Co., Inc.
6400 West Florissant Avenue

American Zinc, Lead and Smelting Company
1515 Paul Brown Building

712 Missouri Pacific Building
Thirteenth and Olive Street

Shell Oil Company
1221 Locust Street

Missouri-Pacific Railroad
Room 600 - Missouri Pacific Building

Natkin and Company
5555 Manchester

Distribution List of "Rules"

National Tube Division, United States
Steel Corporation
1221 Locust Street

Sugar Creek Creamery Company
3301 Park Avenue

H. Pauk and Sons Manufacturing
1301-1327 North Fifteenth Street

Borbein, Young and Company
3663 Forest Park Avenue

The Salvation Army-Midland Division
122 North Seventh

Becker Marsden Company
3818 Lindell Boulevard

General Equipment Company
3952 Clayton Avenue

Doane Agricultural Service
5144 Delmar

Smith-Scharff Paper Company
3732 North Broadway

Lowell Bleachery, Incorporated
Courtois and Polk Streets

Morrison Distributing Company
1250 Macklind Avenue

Bonnee Frozen Products Company
8144 Olive Street Road

Laclede Steel Company

Mr. Herman A. Lueking
Secretary-Treasurer
1531 North Fourteenth Street

Walsh Refractories Corporation
101 Ferry Street

Rhodes Equipment Company
4485 Olive Street

McMahon Pontiac Company
4100 Gravois Avenue

The P. D. George Paint Company

Drug Package, Incorporated
2419 Glasgow Avenue

Missouri Research Laboratories
2109 Locust Street

A. Moll Grocer Company
5659 Delmar

Ward Baking Company
4510 Parkview Place

Hill Hentschel Company
3928 Clayton

American National Bank
6639 South Kingshighway Boulevard

Miss Stella Katzules
4572 Redbud

Brown Shoe Company
8300 Maryland

Union Electric Company
5100 Clayton Avenue

Berlitz School of Languages
4117 Lindell Boulevard

Miss Hulling's Cafeteria
1103 Locust Street

Mercantile Trust Company
721 Locust Street

Federated Metals Company
4041 Park Avenue

Carman Company
4523 Shaw

Chester B. Franz, Incorporated
1100 North Sixth Street

Werner Metalware Company
2117 North Broadway

Meyer Brother's Drug Company
217 South Fourth Street

Marchand Calculators, Incorporated
1622 Olive Street

Distribution List of "Rules"

Frelich, Incorporated
Washington Avenue at Eighth Street

H. J. Heinz Company
4240 Utah

Swope's
905 Locust Street

The Kroger Company
1311 Thirty-Ninth Street

Western Union Telegraph Company
900 Chestnut Street

Manufacturers Supplies Company
730 North Eighteenth Street

Hotel Statler
Ninth and Washington

American Car and Foundry
2800 DeKalb

Visinet Mill
2400 South Second Street

Military Personnel Records Center
4300 Goodfellow

General Outdoor Advertising Company, Inc.
3905 McPherson

Board of Education

Mrs. B. Springrose
9714 Midland
University City 4, Missouri

Magestic Manufacturing Company
4550 Gustine

A. F. L. Central Trades
1411 North Grand

St. Louis Ordinance Plant
4300 Goodfellow

St. Louis Parking Lot Association

Boy Scouts of America

Retail Food Association

American Legion

League of Women Voters

St. John's Hospital

Cavanaugh Realty Company

McQuay Morris

St. Louis Public Service Company

Mr. Ben Scheve

Schroeder and Tremayne, Incorporated
1711 Delmar Boulevard

Vestal, Incorporated
4963 Manchester

Washington University

H. E. Krisman and Company
415 North Eighth Street

F. Feldman Rueckert Meat Company
2047 Clark

St. Louis Button Company, Incorporated
413-15 Lucas Avenue

St. Louis Junior Chamber of Commerce

Kuhs Buick Company
2837 North Grand

Cooke Tractor Company, Incorporated
2120 South Seventh Street

General Electric Company
112 North Fourth Street

Eberhardt Manufacturing Company
1700 Marconi Avenue

Storz Surgical Instruments
4570 Audubon Avenue

London Guarantee and Accident Company
Limited
911 Boatmen's Bank Building

Bemis Brother's Bag Company
601 South Fourth Street

Distribution List of "Rules"

Kruickemeyer Machine and Parts Company
1365 Cockrill

J. F. Conrad Grocery Company
1218 Central Industrial Drive

Te-Company, Incorporated
801 North Second Street

West End Kiwanis Club

Recordak Corporation
3303 Washington Boulevard

Food Equipment Corporation
400 Humboldt Avenue

Price Waterhouse and Company
1221 Locust Street

Hartford Accident and Indemnity Company
401 Pine Street

F. J. Schleicher Paper Box Company
1811 Chouteau Avenue

Hussman Refrigeration, Incorporated
2401 North Leffingwell

National Retail Farm Equipment
1014 Locust Street

St. Louis Association of Credit Men
505 North Seventh Street

Louhoff Grain Company
7020 Broadway

Ruthrauff and Ryan
611 Olive Street

Colonial Baking Company
4410 Gravois

Manchester Bank
4015 Chouteau

Mr. Anthony Wolz
General Accounting
1017 Olive

Jakes-Evans
4427 Geraldine

Concord Wright Machinery and Company
1229 North Broadway

Chamber Motors
3863 South Grand

O. A. Knell Company
3524 Gravois

Hardware Mutual Casualty Company
4160 Laclede

Brooks Paper Company
400 Security Building

Haughton Elevator Company
121 South Eleventh Street

Standard Display Company
1710 Delmar

G. M. A. C.
4158 Lindell Boulevard

Merck and Company, Incorporated
4545 Oleatha

St. Louis Lithographing Company
6801 South Broadway

Johansen Shoe Company
3642 Laclede

Killark Electric Manufacturing Company
3940 Easton Avenue

S. C. Johnson and Son, Incorporated
3218 Brannon

Mrs. W. Meyer
2118 Mullanphy

Shapleigh Hardware Company
900 Spruce Street

Complete Auto Transit
5545 Natural Bridge

A. Kilpatrick Sons Foundry Company
625 East Carrie

Comet Theater
4106 Finney

Distribution List of "Rules"

Measuregraph Company
4245 Forest Park

Columbia Terminals Company
1209 Washington

Mrs. M. Kursetch
3522 Morganford

Mrs. John Smith
4053 Winnebago

Chase Bag Company
5033 Southwest

Elder Manufacturing Company
1300 Lucas

Hollander and Company
3900 West Pine

Willingham Construction Company
5245 Northaup

Dazor Manufacturing Company
4481-87 Duncar

Maytag Company
915 South Grand

Bensingers Company
1011 Market

United States Steel Corporation
1108 Shell Building

Central State Paper Bag Company
5222 Natural Bridge Boulevard

Universal Match Company
1501 Locust Street

Alton and Southern Railroad
East St. Louis, Illinois

Monsanto Chemical Company
1700 South Second Street

Automatic Canteen
6955 Olive Street Road
University City, Missouri

Gaylord Container Corporation
111 North Fourth Street

Harford and Company
806 Spruce Street

Aluminum Company of America
3300 Missouri Avenue

George D. Barnard Company
3863 Laclede

Laclede Gas Company

Nash Motors Company
3525 Hampton

Universal Printing Company
1531 Washington Avenue

American Automobile Insurance Company
Room 1752 - Pierce Building

Aeolian Company
1004 Olive Street

Con-Ferro Paint and Varnish Company
3228 North Broadway

Carl Schaeffer Electric Company
1819 Sidney Street

Woermann Construction Company
3800 West Pine Boulevard

Bostich-Southwest, Incorporated
2110 South Vandeventer

General Insurors Incorporated
4144 Lindell Boulevard

Missouri Inspection Bureau
1330 Pierce Building

Century Electric Company
1806 Pine

Freidman Shelby Shoe Company
1509 Washington Avenue

Miss Helen Rodenberg
936a North Kingshighway Boulevard

Mr. B. C. Sanders
Room 1200-Pierce Building

St. Louis Dairy

Distribution List of "Rules"

Mrs. Marcel Boulicault
922 Ambassador Building

Victor Adding Machine and Company
1614 Olive Street

Ravarino and Freschi, Incorporated
4651 Shaw

Mid-Valley Supply Company
3740 Sullivan Avenue

The Home Insurance Company
730 Pierce Building

Monarch Metal Weatherstrip Corporation
6333 Etzel Avenue

Equitable Life Insurance Company
Suite 13-20
3912 Lindell Boulevard

Euclid Sales and Service, Incorporated
5231 Manchester Avenue

Guarantee Electrical Company
4161 Gravois Avenue

Lasalco, Incorporated
2818-38 LaSalle Street

Binkley Coal Sales
2119 Railway Exchange Building

Heydays Shoes, Incorporated
2032 Locust Street

St. Louis Branch of the American
Association of University Women

Bank of St. Louis
Ninth and Washington

Lever Brothers Company
1400 North Pennsylvania

Socony-Vacuum Oil Company
4140 Lindell Boulevard

Great Lakes Carbon Corporation
3570 Lindell Boulevard

Davies Supply and Manufacturing Company
4150 Meramec Street

Reddi-Wip, Incorporated
4205 Forest Park Boulevard

American Surety Company
1811-19 Mississippi Valley Trust Building
506 Olive Street

Walter Bledsoe and Company
1721 Ambassador Building

Usona Manufacturing Company
3512-26 Chouteau Avenue

Westinghouse Electric Supply Company
1011 Spruce Street

League of Women Voters of St. Louis
4740a McPherson Avenue

Women's Traffic Club of Metropolitan
St. Louis

United Negro Organizations

Cavanagh Printing Company
1523 South Tenth Street

United States Post Office

Ordinance Small Arms Center
4300 Goodfellow

St. Louis Retail Food Association
818 Olive Street

Rabbi Abraham E. Halpern

St. Louis Wholesale Drug Company

Freund Bakery

St. Louis Tavern Operators

St. Liborius Church
1835 North Eighteenth Street

Annie Malone Children's Home
2612 Goode Avenue

Green Foundry Company
5380 Bircher Boulevard

Southwest Freight Lines
4800 Bulwer

Distribution List of "Rules"

Epiphany Lutheran Church
4045 Holly Hills

Lambert Pharmacal Company
2117 Franklin

B'nai El Temple
622 Clara Avenue

Ken-Mar V. B. Company
1211 North Vandeventer

Ackley Uniform Company
511 Washington

Romayne Apartment Hotel
5305 Delmar

The Coca Cola Company
8125 Michigan Avenue

Associated Transports, Incorporated
6110 Natural Bridge

Fairgrounds Hotel
3644 Natural Bridge

Peck's Products Company
610 East Clarence Avenue

Reinhardts
4328 Sacramento

Krey Packing Company
2100 Bremen Avenue

Beltmar Building
5473 Delmar

Fritz Smith Manufacturing
923 North Sixth Street

Elder Manufacturing Company
7027 Pennsylvania

Rite-Tite Produce Company
1134 South Sixth Street

Zion Lutheran Church
2500 North Twenty-First Street

Shampaine Company
1920 South Jefferson

The Young Men's Christian Association
1528 Locust Street

United Wood Heel Company
621 Russell Boulevard

St. Louis Cordage Mills
1046 Lafayette

Superior Forwarding Company, Incorporated
2600 South Fourth Street

G. E. Wagner Labs
2721 South Second Street

Concordia Publishing House
3558 South Jefferson

American Car and Foundry Company
2800 DeKalb

Binz Hide and Tallow Company
3430 DeKalb

Lutheran Hospital
2646 Potomac

Casa-Loma Ballroom
3354a Iowa

Federer Realty Company
2600 Gravois

H. Wenzel Tent and Duck Company
1035 Paul Street

Wood Products Company
2609 LaSalle

Front Rank Manufacturing Company
2500 Ohio

USAF Aeronautical Chart and Information
Center
Second and Arsenal

Biederman Furniture Company
Eighth and Franklin

Union Biscuit Company
1110 North Sixth Street

Walsh Freight Lines
1600 North Ninth Street

Distribution List of "Rules"

Church of St. Leo
2315 Mullanphy

Columbia Motor Service Company
1209 Washington

Stix Baer and Fuller Company
Seventh and Washington

Rawlings Manufacturing Company
2307 Lucas

United Fruit and Produce Company
55 Produce Row

Vane Calvert Paint Company
1601 North Broadway

Summit Fast Freight, Incorporated
1811 North Broadway

Federal Cold Storage Company
1828 North Broadway

John Dure Plow Company
2212 North Broadway

Duke Manufacturing Company
2505 North Broadway

Beck and Corbitt Company
1230 North Main Street

Cotton Belt Railroad
1466 North Main Street

Switzer Licorice
612 North First Street

"Checker" Food Products Company
615-617-619 North First Street

Witte Hardware Company
704 North Third Street

Sligo, Incorporated
1301 North Sixth Street

V. Viviano and Brothers
1022 North Seventh Street

Modern Screw Product Company
2307 North Ninth Street

Hadley-Dean Glass Company
703 North Eleventh Street

St. Joseph's Church
1220 North Eleventh Street

White Motor Company
1415 North Thirteenth Street

Absorene Manufacturing Company
1609 North Fourteenth Street

Mound City Forwarding Company, Inc.
1517 North Fifteenth Street

Brauer Brother's Manufacturing Company
817 North Seventeenth Street

Fehlig Brother's Box and Lumber Company
1909 Cole Street

Beck Engineering Company
2100 Cole Street

Hamilton Shoe Company
2107 Lucas

Zieser Kling, Incorporated
1105 Washington

Marx and Haas-Korrekt Company
1635 Washington

Central Pattern Company
118 Delmar

Beatrice Foods Company
2119 Delmar

Beltx Corporation
1110 Washington

Lasar Glass and Manufacturing Company
1313 North Sixteenth

Oxford Filing Supply Company
214 Tyler

Rawlings Manufacturing Company
Baseball Division
927 Tyler

Tyler Metal Products Company
1101 Tyler

Distribution List of "Rules"

Union Electric Company
#4 Ashley

St. Louis Button Company
415 Lucas

St. Louis Braid Company
2035 Lucas

Tower Grove Shoe Company
1124-30 North Market

Royal Bedding Company
721 Cass

Bodine Foundry Company
1601 Cass

Barrett Equipment Company
2101 Cass

Acme Fast Freight, Incorporated
200 Carr

C. Wunderlich Cooperage
821 Clinton Street

Day Brite Lighting, Incorporated
5411 Bulwer

Mississippi Valley Stockyards
61 Angelica

Gruendler Crusher and Pulverising Company
2915 North Market

F. B. Chamberlain Company
41 Branch

Hardboard Fabricators, Incorporated
59 Branch

Our Lady of Perpetual Help Parish
2011 Linton

Mallinckrodt Chemical Works
3600 North Second Street

V. F. Christmann Hardwood
3820 North Second Street

Letterhead and Check Corporation
2940 Benton

Roadway Express, Incorporated
52 Buchanan

Grace Hill House
2600 Hadley

Schlueter Manufacturing Company
4616 North Broadway

Griesedieck Western Brewery (Plant #2)
3607 North Florissant

McCabe Powers Auto Body Company
5900 North Broadway

St. Louis Car Company
8000 North Broadway

Cupples-Hesse Corporation
4175 North Kingshighway Boulevard

Broderick and Bascom Rope Company
4203 North Union Boulevard

Chevrolet-St. Louis Division
General Motors Corporation
3809 Union Boulevard

Carondelet Manufacturing Company
5826 South Broadway

Johnston Foil Manufacturing Company
6106 South Broadway

Fairbanks-Morse and Company
4301 South Spring

Bailey Farm Dairy Company
4071 Keokuk

Monsanto Chemical Company
8201 Idaho

Stupp Brothers Bridge and Iron Company
3800 Weber Road

St. Louis Steel Casting Company
100 Mott

Inter City Manufacturing Company
701 Koeln

Chester Iron and Foundry Company
7800 Vulcan

Distribution List of "Rules"

Axelson Manufacturing Company
3844 Walsh

Chandeysson Electric Company
4084 Bingham

Church of Our Lady of Sorrows
5020 Rhodes

William S. Medart Company
7036 Clayton Avenue

St. Louis and San Francisco Railroad
7059 Marquette

Holy Innocents Parish
4964 Reber Place

Chase Bag Company
5033 Southwest

Columbia Theatre
5257 Southwest

National Bearing Division
American Brake Shoe Company
4930 Manchester

Vestal, Incorporated
4963 Manchester

Marquette Tool and Die Company
3185 South Kingshighway Boulevard

Jack Diamond Supply
3425 Watson Road

Stile Craft Manufacturers
1825 Macklind

Manufacturers Railway Company
2927 South Broadway

Welsh Company
1535 South Eighth Street

Immaculate Conception School
3120 Lafayette

Chas. K. Schweizer
231 Russell

Globe Ticket Company of Missouri
2341 LaSalle

C. Hager and Son Hinge Manufacturing Co
139 Victor

Arsenal Station Post Office
2826 South Broadway

Industrial Sugars, Incorporated
3600 South First Street

Benjamin Moor and Company
1630 South Second Street

Gaylord Container Corporation
3000 South Second Street

McBride's Express
1141 South Sixth Street

General Elevator Engineering Company
1210 South Eighth Street

Chas. Todd Overall Cleaning Company
2736 South Ninth Street

American Car and Foundry Company
134 Russell

City of St. Louis
Refuge Division
4190 South First Street

Manufacturers Bank and Trust Company
1731 South Broadway

Philadelphia Quartz Company
4238 Geraldine

Missouri-Kansas-Texas Railroad Company
Foot of Doddridge Avenue

Quality Dairy Company
4630 West Florissant

Ralston Purina Company
4142 North Union Boulevard

Children's Home Society of Missouri
4415 Margaretta

Melcher Schene Hardware and Lumber Co.
4800 Natural Bridge

Northwestern Hotel
4919 Natural Bridge

Distribution List of "Rules"

Lincoln Engineering Company 5701 Natural Bridge	Mid-West Screw Products Company 3662 Park Avenue
Niedringhaus Metal Products Company 5735 Natural Bridge	International Oil Burner Company 3800 Park
Lutheran Altenheim 8721 Halls Ferry Road	Concrete, Incorporated 4101 Park
Drugmaster, Incorporated 4200 North Union Boulevard	Laclede Stoker Company 4438 Hunt Avenue
Union Motor Car Company 1601 South Thirty-Ninth Street	Tower Grove Bank and Trust Company 3134 South Grand
Prince Gardner Company 2025 South Vandeventer	Sears Roebuck and Company 3700 South Grand
Brown Shoe Company Twelfth and Russell	Tober-Saifer Shoe Manufacturing Co. 1204-06 Washington
Velvet Freeze, Incorporated 3230 Gravois	Union Electric Company 7828 Gratiot
Lehmann Machinery Company 3560 Chouteau	Milner Hotel 1734 Washington
Bemis Brother's Bag Company 1058 South Vandeventer	Graham Paper Company 1014 Spruce
Huttig Sash and Door Company 1206 South Vandeventer	Viking Freight Company 614 South Sixth Street
Consolidated Chemical Laboratories 1470 South Vandeventer	Mark Twain Hotel Eighth and Pine
Defiance Machine and Tool Company 1920 South Vandeventer	Boyd Richardson Company 600 Olive Street
Jobbers Manufacturing and Distributing Co. 4138 Manchester	Pope's Cafeteria, Incorporated 805 St. Charles
Central Fire Truck Corporation 4435 Manchester	St. Louis District Corp of Engineers 420 Locust Street
Shriners Hospital 710 South Kingshighway Boulevard	Streckfus Steamers, Incorporated Wharf Foot of Washington
Messiah Lutheran Church 3547 Pestalozzi	The Security Building Company 204 Security Building
Swing-A-Way Manufacturing Company 4100 Beck	MacArthur Hotel 100 North Broadway

Distribution List of "Rules"

St. Regis Hotel
421 North Broadway

Star Binding Manufacturing Company
507 North Broadway

Novelty Sportswear Manufacturing
314 St. Charles

Edward D. Jones and Company
300 North Fourth Street

Union Cap Company
506 North Fourth Street

Freund's
418-20 North Sixth Street

Brady Drake Photo Company
623 Chestnut

Title Insurance Corporation of St. L ouis
810 Chestnut

Western Union Telegraph Company
900 Chestnut

Pioneer Paper Company
2311 Chestnut

St. Louis Steel Products
2209 Chestnut

Greenfield's Company
Sixth and Locust

Commercial Blue Print Company
1123 Locust Street

Sayman Products Company
2101 Locust Street

J. W. Losse Tailoring Company
520 Olive Street

Wolff's Clothurs, Incorporated
700 Olive Street

Angelica Uniform
1419 Olive Street

Lane Bryant
405 North Sixth Street

Mangel's
415 North Sixth Street

Security National Bank
312 North Eighth Street

Chas. F. Welek and Company, Incorporated
315 North Tenth Street

Will Ecker and Company
414 North Twelfth Street

Wm. J. Kennedy Stationery
802 Pine

Sievert, Incorporated
808 Pine

Chas. S. Lewis and Company, Incorporated
2207 Pine

Rice-Stix, Incorporated
1000 Washington

Ely Walker Dry Goods Company
1520 Washington

Progressive Electrotyping Company
127 South Eleventh Street

The McBee Company
1824 Washington

St. Louis Railroad YMCA
Twentieth and Eugenia

National Lightning Protection Company
2348 Eugenia

S. N. Long Warehouse
828 Gratiot

St. Mary's Infirmary
1536 Papin

Corneli Seed Company
101 Chouteau

Lewin-Mathes Company
Twelfth and Chouteau

Champ Spring Company
2107 Chouteau

Distribution List of "Rules"

St. Louis Terminal Warehouse
826 Clark Street

Forbes Coffee Company
922 Clark

Air Reductions
630 South Second

Lewis-Howe Company
319 South Fourth Street

Bemis Brother's Bag Company
601 South Fourth Street

Markwort Sporting Goods Company
212 South Seventh Street

Frisco Railroad Company
705 South Seventh Street

Shaughnessy-Kniep-Hawe Paper Company
204 South Eighth Street

Comfort Printing and Stationery Company
200 South Seventh Street

St. Louis Electrotpe Foundry Company
125 South Eighth Street

Lee Way Motor Freight, Incorporated
814 South Thirteenth Street

J. C. Penney Company, Incorporated
400 South Fourteenth Street

The Pullman Company
517 South Twenty-First Street

Bray Company
510 North Compton

Envelope Manufacturing Company
2815 Pine

Middlewest Freightways, Incorporated
507 South Theresa

Western Supplies Company
2920 Cass

Ramsey Corporation
3693 Forest Park

Century Electric Company
3701 Forest Park

Fanchon and Marco
527 North Grand

University Club Building Company
Room 215 - 607 North Grand

Robertshaw-Fulton Controls
2917 Clark

Butler-Kohaus, Incorporated
2823 Olive Street

American Trunk and Sample Case
Manufacturing Company, Incorporated
3829 Olive Street

Falstaff Brewing Corporation
3617 Olive Street

Modern Engraving Company
3411 Pine

Berea Presbyterian Church
3027 Pine

Clifton Heights Post 222
The American Legion
3525 Pine

General Electric Supply Company
2653 Locust Street

Cinch Manufacturing Corporation
2625 Locust Street

Convy Heel Covering Company
3016 Locust Street

Missouri Printing Company
3160 Easton Avenue

Coca-Cola Bottling Company
2950 North Market

Murre Glass Company
3815 Laclede

Liquid Carbonic Corporation
3417 Bernard

General Baking Company
1019 North Jefferson

Distribution List of "Rules"

Dr. A. E. Walters
820 North Grand

Best Motor Lines
3675 Chouteau

Steelcote Manufacturing Company
3418 Gratiot

Falstaff Brewing Corporation
3684 Forest Park

Chicago, Burlington and Quincy Railroad
600 South Ranken

Yung and Mueller Bakery Company
1915 North Prairie

Century Foundry
3711 Market

Seidel Coal and Coke Company
3524 Washington

St. Louis Chapter American
Red Cross
3414 Lindell

F. W. Woolworth Company
3663 Lindell

St. Ann's Church
1220 Whittier

Immanuel Lutheran Church
3540 Marcus

Killark Electric Manufacturing Company
3940 Easton Avenue

Chapman Ice Cream Company
3912 Easton Avenue

St. Stephen's Lutheran Church
515 Pendleton

Edward C. Dillmann
1418 Pendleton

Hygrade Water and Soda Company
647 Tower Grove

Walter Freund Bread Company
920 South Taylor

Western Electric Company
4240 Duncan

N. O. Nelson Company
4316 Duncan

Post-Dispatch Auxiliary
4340 Duncan

Simmons Sisler Company
4127 Forest Park Avenue

Second Presbyterian Church
4501 Westminster Place

St. Louis Children's Hospital
500 South Kingshighway Boulevard

Artcraft Venetian Blind Manufacturing Co.
3960 Olive Street

Windsor Apartment Hotel
4209 Lindell Boulevard

James R. Kearney Corporation
4236 Clayton Avenue

Magnus Metal Division of National
Lead Company
4153 Clayton Avenue

Tom Boy, Incorporated
4353 Clayton

West Presbyterian Church
5872 Maple Avenue

Curtis Manufacturing Company
1905 Kienlen

Delway Hotel
5017 Delmar Boulevard

American Bed and Spring Company
5255 Delmar Boulevard

Windermere Hotel
5603 Delmar Boulevard

A. Mall Grocery Company
5659 Delmar Boulevard

Fayette R. Plumb, Incorporated
6300 St. Louis Avenue

Distribution List of "Rules"

DePaul Hospital
2415 North Kingshighway Boulevard

Artophone Corporation
700 Rosedale

St. Louis Public Service Company
c/o Safety Engineering Department
Transit Casualty Company
901 Washington

Schenley Import Corporation
3011 Cass

National Lead Company
Titanium Division
Carondelet Station

Fisher Body Division G. M. C.
3809 Union Boulevard

American National Red Cross
4050 Lindell Boulevard

The Medart Company
3535 DeKalb

Monsanto Chemical Company
J. F. Queeny Plant
1800 South Second Street

The Pullman Company
5500 Bircher Boulevard

Fulton Iron Works
1259 Delaware

Adas Bnai Israel Congregation
5596 Ridge Avenue

Fred W. Mears Heel Company
4057 Forest Park

Meyer Brothers Drug
217 South Fourth Street

H. B. Deal and Company, Incorporated
5517 Manchester

Pierce Building Corporation
1032 Pierce Building

Hubbell Metals, Incorporated
2817 Laclede Avenue

Midland Products, Incorporated
4417 Oleatha

Singer Sewing Machine Company
823 Locust Street

Motor Cargo, Incorporated
1120 Branch

Merchants' Exchange of St. Louis
111 North Third Street

Third Church of Christ, Scientist
3524 Russell

American Packing Company
Post Office Box 183
3858 Garfield

Security Fire Door Company
3044 Lambdin

Syndicate Trust Building
915 Olive Street

Merchants Refrigerating Company
Lewis and O'Fallon

Duncan Packing Company
1550 South Second Street

Blue Line Chemical Company
302 South Broadway

Lee Transportation Company
111 North Fourth Street - Room 430

Glasco Electric Company
727 North Eleventh Street

St. Louis Lithographing Company
6801 South Broadway

Benjamin W. Freeman Heel Company
Chouteau Avenue at Thirteenth

Sodemann Heat and Power Company
2306 Delmar Boulevard

St. Louis Candle Wax Company
1821 Lucas

Kirn Sign Company
2739 Washington

Distribution List of "Rules"

Lutheran Convalescent Home
4359 Taft

Hydraulic-Press Brick Company
1537 South Kingshighway Boulevard

Arthur Morgan Trucking Company
2923 North Broadway

Tower Grove Baptist Church
4318 Norfolk

Western Wire Products Company
1415 South Eighteenth Street

Grinnell Company, Incorporated
1615 South Kingshighway Boulevard

Rosenthal Paper Company
200 Lynch

Grace Sign and Manufacturing Company
3601 South Second Street

Cooke Tractor Company
2120 South Seventh Street

Concrete, Incorporated
650 Rosedale

The Barnard Free Skin and Cancer Hospital
3427 Washington

Nooter Corporation
1400 South Second Street

Jefferson-Gravois Bank of St. Louis
2604 South Jefferson

Kregel Casket Company
1401 North Eighteenth Street

Hussman and Roper Freight Lines
1717 North Broadway

McPheeters Warehouse Company
#5 Carr Street

Procter and Gamble Manufacturing Company
169 East Grand

St. Louis Screw and Bolt Company
6900 North Broadway

Wherry Engineering Company
3229 Morganford

Imse-Schilling Sash and Door Company
4217 Beck

Mr. Chester M. Chapin
Lindell Building
808 Washington

Rosenthal Ackerman
506 North Fourth

Mr. Edmund Donk
Eleventh Floor
418 Olive

Empire Coffee Company
612 South Sixth Street

Wabash Railroad Company
2028 Clark

St. Louis Restaurant Association
721 Olive Street

H. W. Kiel Auditorium
Fourteenth and Market

Metal Goods Corporation
5239 Brown

Union Methodist Church
3543 Watson Road

Fouke Fur Company
1328 South Kingshighway Boulevard

Central Institute for the Deaf
818 South Kingshighway Boulevard

United Bank and Trust Company
600 North Broadway

First National Bank
Broadway and Olive

Airtherm Manufacturing Company
700 South Spring

Pennsylvania Railroad
Passenger Coach Yard
601 South Compton

Distribution List of "Rules"

St. Nicholas Greek Orthodox Church
4957-67 Forest Park

St. Louis Christian Home
3033 North Euclid

Memorial Home
2609 South Grand

St. Barbara's Church

Service Blue Print
710 Pine

Mary R. Wolff Real Estate Management
5457 Delmar

Mr. John Seaines
2940 Clark

E. E. Sauer Machine Company
904 South Fourth Street

Walgreen Drug Stores
3976 Page Boulevard

Schenley Import Corporation
3015 Cass

Easton Air Lines, Incorporated
411 North Tenth Street

Sandusky Cooperage and Lumber Company
Buder Building
Seventh and Market

Transit Casualty Company
615 North Ninth Street

International Harvester Company
District Sales Office
2508-14 North Broadway

Pearlstone Company
2035 Washington

St. Gabriel's Church
6303 Nottingham

Mound City China
2001 Locust

Scruggs-Vandervoort Barney
913 Olive Street

Flat Steel Manufacturing Company
3230 South Thirteenth Street

Rolla Truck Lines, Incorporated
1231 South Eighth Street

Eden Publishing House
1712-24 Chouteau

Precision Tool and Die Company
3110 Park

Loy-Lange Box Company
222 Russell

Western Textile Products Company
2131 Hickory

Ed. F. Mangelsdorf and Brothers, Inc.
1020 South Fourth Street

Toby Lane, Incorporated
1111 Washington

Charles Meyers and Company
1223 Washington

Greeley Presbyterian Church
2240 St. Louis

Decatur Cartage Company
121 Bremen Avenue

Hussman Refrigerator Company
2401 North Leffingwell

Central States Paper and Bag Company
5221 Natural Bridge Road

The Kilgen Organ Company
4632 West Florissant

The Ruberoid Company
9215 Riverview Drive

Physicians Exchange
3010 South Grand

Health Center Service
Room 1 - Municipal Courts Building
Fourteenth and Market

P. J. Holloran Company
1515 Clark

Distribution List of "Rules"

Gulf Mobile and Ohio Railroad
2039 Randolph

Schroeder and Tremayne, Incorporated
Sponges and Chamois

Carson-Union-May-Stern
1140 Olive

Aeolian Company of Missouri
7004 Olive

Sidney Weber, Incorporated
2218 Locust

Eighteenth Street Garage
1723 Chestnut

Moot Carton and Paper Company
2226 Eugenia

Hotel Jefferson
415 North Twelfth Street

Hotel Siesta
2840 Olive

Grant Medical Clinic
114 North Taylor

Barnes Hospital
600 South Kingshighway Boulevard

Timberly Hotel
14 South Taylor

Lantz Brothers Baking Company
38 North Sarah

Gane Brothers and Lane, Incorporated
4115 Forest Park Boulevard

United Shoe Machinery Corporation
4045 Forest Park

Universal Engel Paper Box Company
520 O'Fallon

Editson Brothers Stores, Incorporated
315 Washington

Lennox Hotel
Ninth and Washington

A P P E N D I X V

PROPOSED PROGRAM FOR RADIO STATIONS

(Announcement to be used at 9:30 A.M. - Saturday, January 16, 1954.)

Attention, please. At 9:45 this morning, St. Louis and University City will conduct their first PUBLIC air-raid drill. The sirens will first sound the Red Warning--a three minute wailing sound. Wherever you are--in a car, on the street, at home, in a building or at school, DO YOUR PART to make the drill a full success. When the "All Clear" sounds a few minutes later, resume normal activity.

(Announcement to be used at 9:45 A.M., January 16, 1954.)

Listen, everybody. The air-raid sirens in the St. Louis Attack Warning System--all 127 of them--all over the city and the 9 sirens in University City--are now beginning to sound the Red Warning. This is only a test. It is not the real thing--so you need not get panicky or excited. But--even though this is only a test--everyone should do his part in it. By doing what we should do in this test, each one of us can learn what to do if the real thing ever comes to St. Louis. But we all should be ready--just in case!

So--wherever you are--whatever you are doing--here is what you should do NOW--while the sirens are wailing their Red Warning.

If you are in a vehicle--On an Aidway.....get off if possible or pull to curb. Elsewhere--pull to curb if you can. If you can't, stop where you are. All get down as low as possible. (Hunt better shelter in real attack.)

If you are on the street--Downtown, or in a business district, get into a large building quickly. Elsewhere--get in a building, or close to a solid wall or earth embankment. Shield your face and crouch down. (Lie down in real attack.)

If you are at home--Go to basement or other prepared shelter. Turn off all open flames but DON'T shut off pilot lights.

If you are in a building--Obey the wardens. Go to assigned shelters, if any. Otherwise stay put, but get away from windows.

If you are at school--Obey the teacher. Go to assigned shelter quietly.

In a moment, the Red Warning will be finished, and the sirens will be silent for several minutes--to give everybody an opportunity to do what he should do in this test. If you have done your part, in accordance with the instructions that have just been given to you, sit tight, and stay where you are for the few minutes until the sirens sound the "All Clear." If you have not yet done your part--DO IT NOW--and then wait until the "All Clear" is sounded.-----

While we are all waiting for the "All Clear" to end the test--it will be only a few minutes--here is a bit of music for your enjoyment.

(One or two records can be played during the interval.)

(At 9:55)--It is now 9:55 A.M. and the sirens have begun the "All Clear" signal. This signal consists of three separate one-minute blasts, with two minutes of silence between each blast. It means that we are all free to resume normal activity again. Thank you all for your help and cooperation in making this first city-wide test a success, and may we remind you that this station will cooperate in giving you a warning if a real attack should ever occur.

(Program can now be resumed)

A P P E N D I X VI

POLICE ORDER

January 5, 1954

Commanding Officers:

There will be a public air raid drill held in St. Louis at 9:45 A.M. on Saturday, January 16, 1954. This will be the first occasion for public participation in any civil defense exercise.

The primary purpose for holding this practice is clearly set forth in a letter addressed to this Department by General Francis P. Hardaway, Director of Civil Defense: "We feel that this is a very important exercise which should constitute the best means that can be devised to educate the public in learning to do those things that would be vital to saving lives in case of a real attack.

Admittedly, it will require much effort on the part of the Police Department and many others, the main burden of success, however, would fall upon the Police Department.

We feel that the effort required is worth many times its cost since an exercise of this sort can be the means of saving many lives should an attack occur."

In preparation for this test the St. Louis Office of Civil Defense has had about 1,500,000 small leaflets distributed. These leaflets contain instructions for the public to follow upon the sounding of the air raid warning sirens.

Newspapers, radio, and motion picture announcements will also be used to advantage in the test.

Several practice soundings of the air raid sirens have been held during the past months to familiarize the public with the difference between a "red" warning (3 minute wailing sound) and an "all clear" (3 one minute blasts of the sirens).

In an actual air raid it is the duty of the public to seek shelter immediately with the sounding of the warning. However, during this test the Office of Civil Defense hopes that pedestrians will take shelter and those within automobiles will remain quietly parked.

It is the duty and responsibility of the Police Department to halt vehicular traffic and to clear all aidways, reserving them for emergency Civil Defense traffic only.

Since it will tax the strength of the Department to the utmost to police the aidways, the American Legion and Boy Scouts have been designated by the Office of Civil Defense to assist in directing pedestrians to shelter.

Boy scouts will be utilized within their own neighborhoods and members of the Legion will be stationed in the downtown area where large crowds of people will be on the sidewalks.

There will also be between 50 and 100 members of the American Legion acting as observers who will report to the Civil Defense Control Room Center the results of the test in the neighborhood in which they are stationed.

Members of the Auxiliary Police will be assigned to each district to supplement the amount of regular police available for duty on the aidways. They will be at the disposal of the District Commander for assignment and under his jurisdiction.

DETAILS OF THE TEST

At 9:45 to 9:48 A.M. the "red" warning will be sounded on the air raid sirens. Exactly 10 minutes later at 9:55 A.M. the "all clear" will be sounded. This means that at 9:45 the air raid sirens will sound continuously with a rising and falling wailing for three minutes followed by seven minutes of silence and at 9:55 with the "all clear" there will be a one minute steady wail of the siren followed by two minutes of silence, 9:58 a one minute steady wail of the siren followed by two minutes of silence, and at 10:01 a one minute steady wail of the siren, completing the "all clear."

PROCEDURE PRIOR TO THE TEST

1. All available beat officers are to proceed to a point close to their emergency mobilization position on the aidway and be ready to assume police duty on the aidway at the time of the first sounding of the sirens.
2. All available scout cars are to proceed to a point near the aidway prior to the test and be ready to assume their emergency patrol of the aidway during the test, assisting with diverting traffic.
3. Cruising patrols in an actual air raid would proceed to the district station; however, for this test only they will assist with the stopping and diverting of traffic on the aidways.
4. Captains' cars during an actual air raid would proceed to the district station and stand by; however, during this test only they will patrol the aidways in a supervisory capacity and serve as an observation car which will be contacted by radio to ascertain particular conditions in their location.
5. Motorcycle and Tri-car officers would during an actual air raid be utilized as messengers; however, during this test they will be assigned by the Commander of the Traffic Division to aidway duty to assist in diverting and halting traffic.

PROCEDURE DURING THE TEST

1. Starting at the first sound of the air raid warning all traffic is to be halted on aidways.
2. The busses will be allowed to proceed to the next bus stop where they will pull to the curb and halt (passengers are to remain on streetcars and busses and the Public Service Company has issued the necessary instructions to its operators regarding this test.)
3. The streetcars will be allowed to proceed to the next safety zone where they will halt.
4. Public Utility vehicles, such as Electric, Gas, Water, Mail trucks, etc. are to pull to the curb and remain parked, but since they are authorized Civil Defense vehicles, they are allowed to remain parked on the aidway.

5. Any funeral procession on an aidway during the alert is to be halted at the curb, but kept intact, and not diverted to a side street. (This arrangement has been made by the Department and the funeral directors association for this test only).
6. Vehicles on emergency runs are to be permitted the use of the aidways.
7. Press cards issued by this Department are to be recognized for permission to use the aidway.
8. The Fire Department will move several pieces of equipment to their emergency locations during the test using the aidways for this purpose.
9. All other vehicular traffic is to be diverted from the aidways so that they are as clear as possible. Instruct the drivers to pull into a side street and park until the end of the test.
10. Care should be exercised in diverting traffic into a side street not to clog same, but to keep a fire lane open at all time.
11. Particular attention is directed to the District Commanders having hospitals within their district so that routes to the hospital from the aidway do not become blocked by traffic.
12. The East St. Louis Police Department will halt all traffic west bound on the McArthur Bridge, the Veterans Bridge, and the Eads Bridge. The Venice, Illinois Police Department will halt all west bound traffic across the McKinley Bridge. This Department is to halt all east bound traffic over these bridges. Vehicles on the bridge at the time are to be allowed to leave the structure, west bound vehicles being halted after leaving the bridge.
13. Emergency police calls will have priority over the Civil Defense Test and any radio calls directed to cars are to be answered regardless of the Civil Defense assignment.
14. Commanding Officers will instruct their Sergeants to obtain from each officer of their command a small report containing the following information:
 - A. Location stationed.
 - B. Was vehicular traffic completely stopped, partially stopped, or not stopped?
 - C.. Did pedestrians take shelter, partly take shelter, did not take shelter?

From these reports the Commander will prepare a report to me listing those locations in which the test was very successful, partially successful, or not successful. In the last two instances with the reasons stated. This report is to be forwarded not later than January 18, 1954.

Jeremiah O'Connell
Chief of Police

rls:

A P P E N D I X VII

The following persons have been invited to be present at the Control Center on January 16, 1954:

Colonel William Talbot	Mr. Robert Rippeto
Mr. A. C. Tilley and Staff	Mr. Joseph P. Sestric
Mr. A. S. McDaniel and Staff	Mr. Edward Endicott
Mayor Raymond R. Tucker	Colonel I. A. Long
Brig. General Thrasher	Mr. James P. Hickok
Mr. Harry Links	Mr. Aloys Kaufmann
Chief Walter Kammann	Mr. Oscar Ehrhardt
Mr. Neal J. Campbell	Mr. William Webb
Mr. Frank McDevitt	Mr. Howard Baer
Mrs. Virginia Brungard	Mr. Adrian W. Frazier
Mr. Patrick Taylor	Reverend Henry Dederer
Mr. Norman Goehler	Reverend James E. Hoflich
Dr. Walter E. Hennerich	Rabbi Abraham E. Halpern
Dr. J. Earl Smith	Mr. John H. Poelker
Colonel John D. Kerr	Mr. Edwin M. Clark
Chief Jeremiah O'Connell	Mr. J. R. Peterson
Dr. A. L. Hughes	Mr. Clifford G. Wassall
Dr. A. G. Rouse	Mr. Leo Bohannon
Mr. John L. Christian	Mr. David P. Wohl
Mr. Roy Wingate	Commander Marshall Hageman
Mr. Ernest Kuehner	Mr. Phillip Hickey
Mr. Henry S. Till	Mr. Luman Matthews
Mr. Clarence T. Wilson	Mr. Laurence Miller
Mr. Frank Kriz	Mr. Lester Kropp
Mr. Edward Sweeney	Mr. E. Lansing Ray
Mr. John C. Baine	Mr. Joseph Pulitzer
Mr. Conway B. Briscoe	Mr. C. R. Skow
Mr. Rudolph Danstedt	Mr. A. A. Hiffman

A P P E N D I X VIII

A PROCLAMATION

WHEREAS, the situation throughout the world remains tense and the conditions for a firm and lasting peace have not yet been established; and

WHEREAS, in the event of war or of an enemy attack preceding the state of war, St. Louis is one of the leading cities of the nation that will undoubtedly be subjected to a devastating atomic attack; and

WHEREAS, the terrible facts of such an attack especially against an unprotected people would produce many casualties; and

WHEREAS, casualties can be tremendously reduced through advance preparation and precautions; and

WHEREAS, a Civil Defense test will be conducted on January 16, 1954, which is designed to teach people the simple things they can and should do that would save many thousands of lives if a real attack were ever to occur;

NOW, THEREFORE, I, Raymond R. Tucker, Mayor of the City of St. Louis, do call upon all the citizens of St. Louis wherever they may be to cooperate fully and wholeheartedly in doing all of the things they have been asked to do at the time the sirens throughout the city sound the red warning at 9:45 A.M. on Saturday, January 16, 1954.

IN WITNESS WHEREOF, I have hereunto set my hand and caused to be affixed the Seal of the City of St. Louis on this sixth day of January, A.D., 1954.

MAYOR

ATTEST:

REGISTER

A P P E N D I X IX

REPORT OF MISSOURI CIVIL DEFENSE AGENCY
ON
PUBLIC PARTICIPATION TEST, JANUARY 16, 1954

MEMORANDUM TO: Brig. General F. P. Hardaway, Civil Defense Director, St. Louis

FROM: Ken Wood, Assistant State Civil Defense Director

Subject: Observation, Attack Warning Drill, January 16, 1954

1. This observer and Charles E. Dewey, Jr., Chief of Communication Division, Missouri Civil Defense Agency, rode in a police car with Captain McAllister and the driver, Corporal Pearson. The splendid cooperation and cordiality of these officers, together with their sincere interest in Civil Defense, is to be highly commended.
2. We started from Hotel DeSoto at approximately 9:35 A.M. and began to cruise slowly down 12th Street and up Natural Bridge. Captain McAllister was disturbed in that there were very few Aidway Signs, particularly along 12th Street. This factor was rechecked on the return trip to below Market Street and there was an apparent shortage of such signs, particularly on the east side of 12th Street.
3. Mr. Dewey took sound level reading of the sirens when they were put into operation at 9:45 A.M. both when our car was parked and underway. They were indicative of the fact that at points near the sirens the sound level is adequate to be easily heard by a motorist in a car with the windows up. However, at points between sirens they are inaudible. This is not considered to be serious, however, since a moving motorist will pass within hearing distance of one or more sirens during the three minute "Red Alert" period.
4. When the "Red Alert" first sounded, motorists immediately began to pull over to the curb and stop--instead of pulling clear off the Aidway. It is felt that this was a natural reaction and of no great importance, in that this could be easily corrected by police instruction. Also, there were many cars parked along the curb of the Aidway without occupants, but this, again, is unavoidable and would not impede Civil Defense traffic.
5. Our car travelled to Union Avenue, observing no unauthorized traffic movement on Natural Bridge or on any side streets. Also, there were no pedestrians in sight. Some young boys were seen crouched against a building in the "duck and cover" style during the "Red Alert" which was a gratifying incident that speaks well for Civil Defense training in St. Louis schools.
6. The Natural Bridge Aidway was excellently manned by both regular and auxiliary police at most intersections. Their men are to be complimented on their promptness in reporting, (even though prearrangements called for them to be within walking distance) and in their efficient handling of the situation.
7. We reached Union Avenue before the "All Clear" began to sound and our only unfavorable observation was that employees were grouped at the windows of their various places of business. However, this can be attributed to natural curiosity on their parts and an almost inevitable occurrence in a non-surprise drill, especially since some time had passed after the "Red Alert" was finished sounding.

8. A funeral procession was observed stopped and blocked from coming on to Natural Bridge from a side street. It was remarked that trouble might occur in drills where the person in charge might not be a member of the Funeral Directors' Association. This possibility might be explored and corrected, if necessary.

9. At the first sounding of the "All Clear," autos seemed to spring back into movement and traffic became normal almost immediately. Our car continued from Union Avenue to city limits and returned during sounding of complete "All Clear;" there was some confusion on the part of a very few motorists on the third steady signal, as they pulled to the curb and stopped suddenly. This may be attributed to the fact that they were hearing the siren much more loudly than they had previously.

10. This observer concludes that this first public participation attack warning drill held in Missouri was 100% successful. Any noticeable individual mistakes were quite minor, and it is felt that even those persons were doing what they thought they should.

KW:mg

A P P E N D I X X

CIVIL DEFENSE ADVISORY COMMITTEE

Raymond R. Tucker, Mayor
Chairman

Victor E. Cooley
Howard F. Baer
Adrian W. Frazier

DIRECTOR OF CIVIL DEFENSE

Francis P. Hardaway

GENERAL STAFF

Chief Deputy Director of Civil Defense

Malcolm Elliott

Deputy Director for Personnel and Administration

Frank D. Sullivan

Deputy Director for Intelligence and Public Information

Paul G. Steinbicker

Deputy Director for Plans and Operations

Robert M. Hanson

Deputy Director for Supply and Engineering

Glen R. Townsend

CHIEFS OF SERVICE

Welfare Service	Mr. Rudolph T. Danstedt Social Planning Council
	Mr. Robert Rippeto St. Louis City Welfare Office
Emergency Relief Service	Mr. Roy Wingate American Red Cross
Police and Warden Service	Colonel Jeremiah O'Connell Chief of Police
Fire Service	Walter H. Kammann Chief of Fire Department
Rescue Service	Mr. Clarence T. Wilson, President C. T. Wilson Contracting Company
Medical and Health Services	Mrs. Edward G. Brungard Director of Public Welfare
Medical Service	Dr. Walter E. Hennerich Hospital Commissioner
Health Service	Dr. J. Earl Smith Health Commissioner
Mortuary Service	Patrick E. Taylor City Coroner
Radiological Defense	Dr. Arthur G. Rouse Associate Professor of Physics St. Louis University
Transportation Service	Mr. John C. Baine, President Public Service Company
Communications Service	Mr. Harry Links Southwestern Bell Telephone Company
Streets and Sewers	Mr. Frank Kriz Director of Streets and Sewers
Utilities Service	Mr. Conway Briscoe Director of Public Utilities
General Engineering	Mr. Frank J. McDevitt, President Board of Public Service
	Mr. Neal J. Campbell St. Louis Engineers' Club
Plant Protection Service	Mr. James P. Hickok Executive Vice-President First National Bank of St. Louis
Supply Service	Mr. Edward J. Sweeney City Supply Commissioner

A P P E N D I X X I

Report of the Chief of Police

This report is not reproduced herein because of its length.

It consists of a detailed report from each of the twelve District Commanders and the Commander of the Traffic Division.

In summary, the report indicates that the test was about 90% to 100% successful with 100% compliance by the public in most districts.

RECEIVED

MAR 22 1954

OFFICE CIVIL DEFENSE

MISSOURI